

Name: Rabbit polyclonal anti-ADRA1D antibody
Product Data Sheet - ANTIBODY**Catalog: TA313437**

Components:	• Rabbit polyclonal anti-ADRA1D antibody (TA313437)
Amount:	100ul
Immunogen:	The antiserum was produced against synthesized peptide derived from internal of human ADRA1D.
Host:	Rabbit
Isotype:	IgG
Species Reactivity:	Human
Guaranteed Applications:	IHC, IF
Suggested Dilutions:	IHC: 1:50~1:100, IF: 1:100~1:500, ELISA: 1:40000
Concentration:	1mg/ml
Buffer:	Phosphate buffered saline (without Mg ²⁺ and Ca ²⁺), pH 7.4, 150mM NaCl, 0.02% sodium azide and 50% glycerol.
Purification:	The antibody was affinity-purified from rabbit antiserum by affinity-chromatography using epitope-specific immunogen.
Storage Condition:	Shipped at -20C. Upon delivery store at -20C. Dilute in PBS (pH7.3) if necessary. Stable for 12 months from date of receipt. Avoid repeated freeze-thaws.

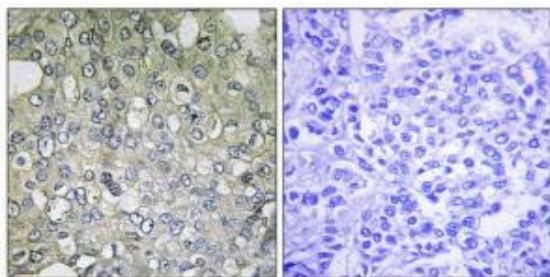
Target

Target Name:	Homo sapiens adrenoceptor alpha 1D (ADRA1D)
Alternative Name:	ADRA1; ADRA1A; ADRA1R; ALPHA1; DAR; dJ779E11.2
Database Link:	NP_000669
Function:	

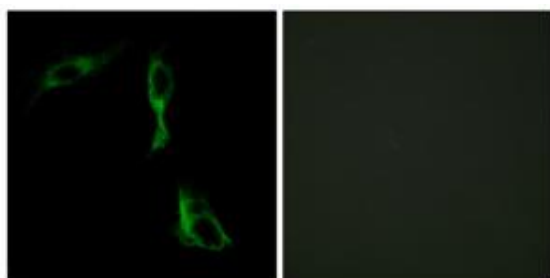
This product is to be used for laboratory only. Not for diagnostic or therapeutic use.

© 2014 OriGene Technologies, Inc. 9620 Medical Center Dr., Suite 200, Rockville, MD 20850

Validation Data



Immunohistochemistry analysis of paraffin-embedded human breast carcinoma tissue using ADRA1D antibody. The picture on the right is treated with the synthesized peptide.



Immunofluorescence analysis of HeLa cells, using ADRA1D antibody. The picture on the right is treated with the synthesized peptide.

* More validation images may be available on our website: <http://www.origene.com/antibody/TA313437.aspx>

This product is to be used for laboratory only. Not for diagnostic or therapeutic use.

© 2014 OriGene Technologies, Inc. 9620 Medical Center Dr., Suite 200, Rockville, MD 20850
