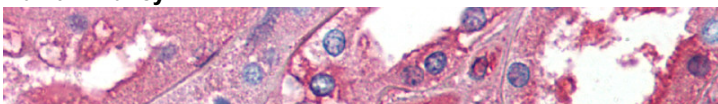
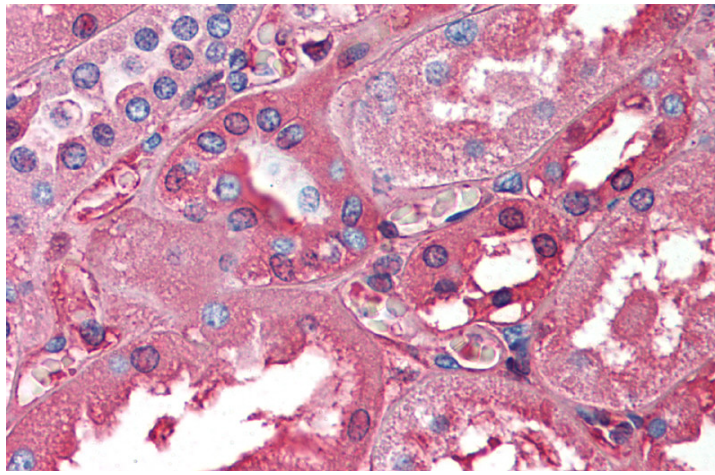


# ALB antibody - N-terminal region (ARP41745\_P050)

## Data Sheet

<b>Product Number</b>	ARP41745_P050
<b>Product Name</b>	ALB antibody - N-terminal region (ARP41745_P050)
<b>Size</b>	50ug
<b>Gene Symbol</b>	<a href="#">ALB</a>
<b>Alias Symbols</b>	DKFZp779N1935; PRO0883; PRO0903; PRO1341
<b>Nucleotide Accession#</b>	<a href="#">NM_000477</a>
<b>Protein Size (# AA)</b>	609 amino acids
<b>Molecular Weight</b>	66kDa
<b>Product Format</b>	Lyophilized powder
<b>NCBI Gene Id</b>	213
<b>Host</b>	Rabbit
<b>Clonality</b>	Polyclonal
<b>Official Gene Full Name</b>	Albumin
<b>Description</b>	This is a rabbit polyclonal antibody against ALB. It was validated on Western Blot using a cell lysate as a positive control. Aviva Systems Biology strives to provide antibodies covering each member of a whole protein family of your interest. We also use our best efforts to provide you antibodies recognize various epitopes of a target protein. For availability of antibody needed for your experiment, please inquire ().
<b>Peptide Sequence</b>	Synthetic peptide located within the following region: <a href="#">YGEADCCAKQEPERNECF LQHKDDNP NLPRLVRPEVDVMCTAFHDNEET</a>
<b>Target Reference</b>	Amirtharaj,G.J., (2008) Biochim. Biophys. Acta 1782 (5), 349-354
<b>Description of Target</b>	Albumin is a soluble, monomeric protein which comprises about one-half of the blood serum protein. Albumin functions primarily as a carrier protein for steroids, fatty acids, and thyroid hormones and plays a role in stabilizing extracellular fluid volume. Albumin is a globular unglycosylated serum protein of molecular weight 65,000. Albumin is synthesized in the liver as prealbumin which has an N-terminal peptide that is removed before the nascent protein is released from the rough endoplasmic reticulum. The product, proalbumin, is in turn cleaved in the Golgi vesicles to produce the secreted albumin. Albumin is a soluble, monomeric protein which comprises about one-half of the blood serum protein. Albumin functions primarily as a carrier protein for steroids, fatty acids, and thyroid hormones and plays a role in stabilizing extracellular fluid volume. Albumin is a globular unglycosylated serum protein of molecular weight 65,000. Albumin is synthesized in the liver as prealbumin which has an N-terminal peptide that is removed before the nascent protein is released from the rough endoplasmic reticulum. The product, proalbumin, is in turn cleaved in the Golgi vesicles to produce the secreted albumin. Publication Note: This RefSeq record includes a subset of the publications that are available for this gene. Please see the Entrez Gene record to access additional publications.
<b>Partner Proteins</b>	ELP3, KAT2B, SMARCA4, SMARCA5, H3F3A, HIST4H4, AGA, AMBP, APOE, CRYAA, CUBN, F7, FCGRT, HNF1A, KLK3, LRP2, LUC7L2, NR5A2, ORM1, PON1, RBP4, RYR2, SRGN, ST13, YWHAG, AMBP, DMWD, FCGRT, LUC7L2, PRB3, UIMC1, USP37
<b>Reconstitution and Storage</b>	Add 50 ul of distilled water. Final anti-ALB antibody concentration is 1 mg/ml in PBS buffer with 2% sucrose. For longer periods of storage, store at -20C. Avoid repeat freeze-thaw cycles.
<b>Additional Information</b>	<b>IHC Information:</b> Paraffin embedded kidney tissue, tested with an antibody dilution of 5 ug/ml.
<b>Lead Time</b>	Domestic: within 24 hours delivery International: 3-5 business days
<b>Blocking Peptide</b>	For anti-ALB antibody is Catalog # AAP41745 (Previous Catalog # AAP24387)
<b>Immunogen</b>	The immunogen for anti-ALB antibody: synthetic peptide directed towards the N terminal of human ALB
<b>Swissprot Id</b>	<a href="#">P02768</a>
<b>Protein Name</b>	Serum albumin
<b>Protein Accession #</b>	<a href="#">NP_000468</a>
<b>Purification</b>	Affinity Purified
<b>Species Reactivity</b>	Human, Guinea pig, Rat, Mouse, Horse
<b>Application</b>	IHC, WB
<b>Predicted Homology Based on Immunogen Sequence</b>	Pig: 100%; Rat: 100%; Human: 100%; Guinea pig: 100%; Mouse: 90%; Horse: 82%
	<b>Human Kidney</b> 

**Image 1**



**Kidney**

This product is for Research Use Only. Not for diagnostic, human, or veterinary use.  
Optimal conditions of its use should be determined by end users.