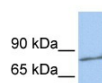


F2 antibody - middle region (ARP41757_P050)

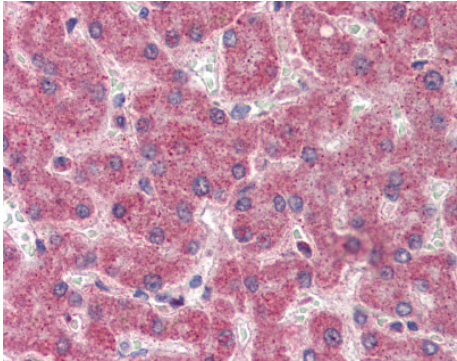
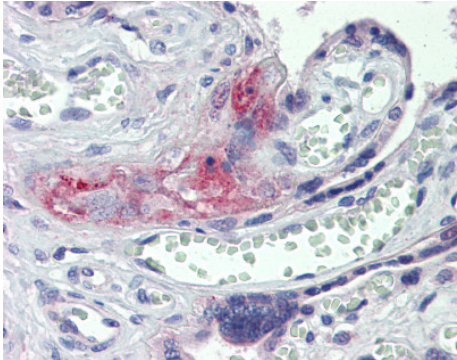
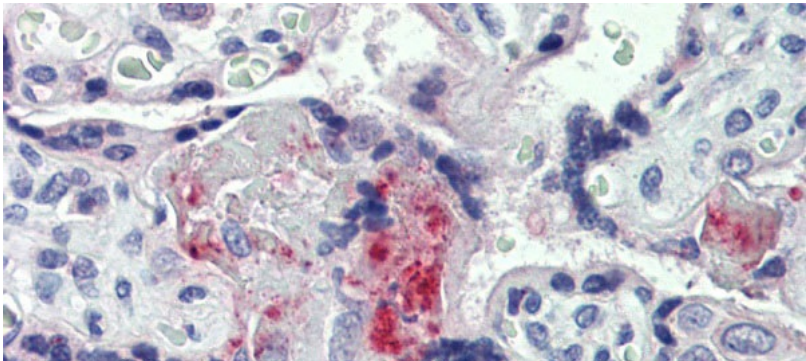
Data Sheet

Product Number	ARP41757_P050
Product Name	F2 antibody - middle region (ARP41757_P050)
Size	50ug
Gene Symbol	F2
Alias Symbols	PT
Nucleotide Accession#	NM_000506
Protein Size (# AA)	622 amino acids
Molecular Weight	70kDa
Product Format	Lyophilized powder
NCBI Gene Id	2147
Host	Rabbit
Clonality	Polyclonal
Official Gene Full Name	Coagulation factor II (thrombin)
Gene Family	ENDOLIG
Description	This is a rabbit polyclonal antibody against F2. It was validated on Western Blot using a cell lysate as a positive control. Aviva Systems Biology strives to provide antibodies covering each member of a whole protein family of your interest. We also use our best efforts to provide you antibodies recognize various epitopes of a target protein. For availability of antibody needed for your experiment, please inquire ().
Peptide Sequence	Synthetic peptide located within the following region: ISDRWVLTAAHCLLYPPWDKNFTENDLLVRIGKHSRTRYERNIEKISMLE
Target Reference	Rossi,E., (2008) Thromb. Haemost. 99 (6), 1030-1034
Description of Target	Coagulation factor II is proteolytically cleaved to form thrombin in the first step of the coagulation cascade which ultimately results in the stemming of blood loss. F2 also plays a role in maintaining vascular integrity during development and postnatal life. Coagulation factor II is proteolytically cleaved to form thrombin in the first step of the coagulation cascade which ultimately results in the stemming of blood loss. F2 also plays a role in maintaining vascular integrity during development and postnatal life. Mutations in F2 leads to various forms of thrombosis and dysprothrombinemia. Publication Note: This RefSeq record includes a subset of the publications that are available for this gene. Please see the Entrez Gene record to access additional publications.
Partner Proteins	BAT2, CDH5, F13A1, F2, FGA, FGB, FGG, HRG, ITGA2B, ITGB3, NID1, PLAT, SERPINA5, SERPINF2, THBS1, BAT2, CDH5, F13A1, F2, FGA, FGB, FGG, HRG, KHDRBS2, NID1, PLAT, THBS1
Reconstitution and Storage	Add 50 ul of distilled water. Final anti-F2 antibody concentration is 1 mg/ml in PBS buffer with 2% sucrose. For longer periods of storage, store at -20C. Avoid repeat freeze-thaw cycles.
Additional Information	IHC Information: Human Placenta: Formalin-Fixed, Paraffin-Embedded (FFPE) IHC Information: Human Placenta: Formalin-Fixed, Paraffin-Embedded (FFPE)
Lead Time	Domestic: within 24 hours delivery International: 3-5 business days
Blocking Peptide	For anti-F2 antibody is Catalog # AAP41757 (Previous Catalog # AAPP10805)
Immunogen	The immunogen for anti-F2 antibody: synthetic peptide directed towards the middle region of human F2
Swissprot Id	P00734
Protein Name	Prothrombin
Protein Accession #	NP_000497
Purification	Affinity Purified
Species Reactivity	Pig, Human, Dog, Horse, Rat, Guinea pig, Mouse, Sheep, Bovine, Zebrafish
Application	IHC, WB
Predicted Homology Based on Immunogen Sequence	Dog: 100%; Pig: 100%; Rat: 100%; Horse: 100%; Human: 100%; Mouse: 100%; Guinea pig: 100%; Sheep: 93%; Bovine: 92%; Zebrafish: 77%

Human 721_B



Rabbit Anti-F2 Antibody
Catalog Number: ARP41757

Image 1	<div><div><div>40 kDa</div><div>31 kDa</div><div>22 kDa</div></div><div><div></div><div></div><div></div></div></div> <div><div>Catalog Number: arp41757</div><div>Lot Number: QC12431</div><div>Lane: 721_B Cell Lysate</div><div>Antibody Titration: 1.0µg/ml</div><div>Gel Concentration: 12%</div></div> <div><div>WB Suggested Anti-F2 Antibody</div><div>Titration: 1 ug/ml</div><div>Positive Control: 721_B cell lysate</div></div>
Image 2	<div><div>Human Liver</div><div></div><div>Anti-F2 / Thrombin antibody IHC staining of human liver. Immunohistochemistry of formalin-fixed, paraffin-embedded tissue after heat-induced antigen retrieval. Antibody concentration 5 ug/ml.</div></div>
Image 3	<div><div>Human Placenta</div><div></div><div>Anti-F2 / Thrombin antibody IHC staining of human placenta. Immunohistochemistry of formalin-fixed, paraffin-embedded tissue after heat-induced antigen retrieval. Antibody concentration 5 ug/ml.</div></div>
Image 4	<div><div>Human Placenta</div><div></div><div><div>Rabbit Anti-F2 Antibody</div><div>Catalog Number: arp41757</div><div>Paraffin Embedded Tissue:</div><div>Human Placenta</div><div>Antibody Concentration: 5 ug/ml</div></div></div>