

Apof antibody - C-terminal region (ARP41961_P050)

Data Sheet

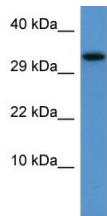
Product Number	ARP41961_P050
Product Name	Apof antibody - C-terminal region (ARP41961_P050)
Size	50ug
Gene Symbol	Apof
Alias Symbols	Apof
Nucleotide Accession#	NM_001024351
Protein Size (# AA)	308 amino acids
Molecular Weight	34kDa
Product Format	Lyophilized powder
NCBI Gene Id	500761
Host	Rabbit
Clonality	Polyclonal
Official Gene Full Name	Apolipoprotein F
Gene Family	APOLIPO
Description	This is a rabbit polyclonal antibody against Apof. It was validated on Western Blot by Aviva Systems Biology. At Aviva Systems Biology we manufacture rabbit polyclonal antibodies on a large scale (200-1000 products/month) of high throughput manner. Our antibodies are peptide based and protein family oriented. We usually provide antibodies covering each member of a whole protein family of your interest. We also use our best efforts to provide you antibodies recognize various epitopes of a target protein. For availability of antibody needed for your experiment, please inquire ().
Peptide Sequence	Synthetic peptide located within the following region: LLPAVGTYNLGTALYYAIKNCTDKAKERGRDGAIDLGYDLLMTMVGMSG
Description of Target	Apof is a minor apolipoprotein that associates with LDL. Apof inhibits cholesteryl ester transfer protein (CETP) activity and appears to be an important regulator of cholesterol transport. Apof also associates to a lesser degree with VLDL, Apo-AI and Apo-All.
Reconstitution and Storage	Add 50 ul of distilled water. Final anti-Apof antibody concentration is 1 mg/ml in PBS buffer with 2% sucrose. For longer periods of storage, store at -20C. Avoid repeat freeze-thaw cycles.
Lead Time	Domestic: within 24 hours delivery International: 3-5 business days
Blocking Peptide	For anti-Apof antibody is Catalog # AAP41961 (Previous Catalog # AAP511102)
Immunogen	The immunogen for anti-Apof antibody: synthetic peptide corresponding to a region of Rat
Swissprot Id	Q5M889
Protein Name	Apolipoprotein F
Protein Accession #	NP_001019522
Purification	Affinity Purified
Species Reactivity	Human, Rat, Mouse, Pig, Rabbit, Bovine, Horse, Guinea pig
Application	WB
Predicted Homology Based on Immunogen Sequence	Rat: 100%; Human: 100%; Mouse: 100%; Pig: 93%; Bovine: 93%; Rabbit: 93%; Horse: 86%; Guinea pig: 86%

Rat Kidney

60 kDa



Image 1



WB Suggested Anti-Apof Antibody Titration: 0.2-1
ug/ml
ELISA Titer: 1:1562500
Positive Control: Rat Kidney

This product is for Research Use Only. Not for diagnostic, human, or veterinary use.
Optimal conditions of its use should be determined by end users.