


CYB561 antibody - middle region (ARP41992_P050)

Data Sheet

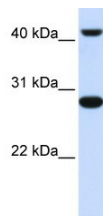
Product Number	ARP41992_P050
Product Name	CYB561 antibody - middle region (ARP41992_P050)
Size	50ug
Gene Symbol	CYB561
Alias Symbols	FRRS2
Nucleotide Accession#	NM_001915
Protein Size (# AA)	251 amino acids
Molecular Weight	27kDa
Product Format	Lyophilized powder
NCBI Gene Id	1534
Host	Rabbit
Clonality	Polyclonal
Official Gene Full Name	Cytochrome b-561
Gene Family	CYB
Description	This is a rabbit polyclonal antibody against CYB561. It was validated on Western Blot using a cell lysate as a positive control. Aviva Systems Biology strives to provide antibodies covering each member of a whole protein family of your interest. We also use our best efforts to provide you antibodies recognize various epitopes of a target protein. For availability of antibody needed for your experiment, please inquire ().
Peptide Sequence	Synthetic peptide located within the following region: LFPGASFSLSRYPQHIFGATIFLLSVGTALLGLKEALLFNLGGKYSA
Target Reference	Fung,M.M., (2008) Circulation 117 (4), 517-525
Description of Target	CYB561 is a senescence-associated protein in normal human oral keratinocytes. Western blots using two different antibodies against two unique regions of this protein target confirm the same apparent molecular weight in our tests.
Partner Proteins	PDHA1, PDHX, PDK1, PDK2, PDK3, PDK4, PDHB, PDHX, PDK1, PDK2, PDK3
Reconstitution and Storage	Add 50 ul of distilled water. Final anti-CYB561 antibody concentration is 1 mg/ml in PBS buffer with 2% sucrose. For longer periods of storage, store at -20C. Avoid repeat freeze-thaw cycles.
Lead Time	Domestic: within 24 hours delivery International: 3-5 business days
Blocking Peptide	For anti-CYB561 antibody is Catalog # AAP41992 (Previous Catalog # AAPP12538)
Immunogen	The immunogen for anti-CYB561 antibody: synthetic peptide directed towards the middle region of human CYB561
Swissprot Id	P49447
Protein Name	Cytochrome b561
Protein Accession #	NP_001906
Purification	Affinity Purified
Species Reactivity	Mouse, Rat, Human, Dog, Pig, Horse, Rabbit, Guinea pig, Bovine, Sheep
Application	WB
Predicted Homology Based on Immunogen Sequence	Dog: 100%; Pig: 100%; Rat: 100%; Horse: 100%; Human: 100%; Mouse: 100%; Sheep: 100%; Bovine: 100%; Rabbit: 100%; Guinea pig: 100%

Human Muscle



90 kDa
65 kDa

Image 1



WB Suggested Anti-CYB561 Antibody Titration:
0.2-1 ug/ml
ELISA Titer: 1:12500
Positive Control: Human Muscle

This product is for Research Use Only. Not for diagnostic, human, or veterinary use.
Optimal conditions of its use should be determined by end users.