

DLAT antibody - N-terminal region (ARP41994_T100)

Data Sheet

Product Number	ARP41994_T100
Product Name	DLAT antibody - N-terminal region (ARP41994_T100)
Size	100ug
Gene Symbol	DLAT
Nucleotide Accession#	NM_001931
Protein Size (# AA)	647 amino acids
Molecular Weight	69kDa
Product Format	Lyophilized powder
Official Gene Full Name	Dihydrolipoamide S-acetyltransferase
Alias Symbols	DLTA; PDC-E2; PDCE2
NCBI Gene Id	1737
Host	Rabbit
Clonality	Polyclonal
Description	This is a rabbit polyclonal antibody against DLAT. It was validated on Western Blot and immunohistochemistry by Aviva Systems Biology. At Aviva Systems Biology we manufacture rabbit polyclonal antibodies on a large scale (200-1000 products/month) of high throughput manner. Our antibodies are peptide based and protein family oriented. We usually provide antibodies covering each member of a whole protein family of your interest. We also use our best efforts to provide you antibodies recognize various epitopes of a target protein. For availability of antibody needed for your experiment, please inquire ().
Peptide Sequence	Synthetic peptide located within the following region: WTPSSGATPRNRLLLQLLGSPGRRYSLPPHQKVPLPSLSPTMQAGTIAR
Target Reference	Head, R.A., (2005) Ann. Neurol. 58 (2), 234-241
Description of Target	DLAT is dihydrolipoamide acetyltransferase, the E2 subunit of the mammalian pyruvate dehydrogenase complex of the inner mitochondrial membrane. Patients with primary biliary cirrhosis show autoantibodies to DLAT. The DLAT gene encodes dihydrolipoamide acetyltransferase (EC 2.3.1.12), the E2 subunit of the mammalian pyruvate dehydrogenase complex (PDC; EC 1.2.4.1) of the inner mitochondrial membrane. Patients with primary biliary cirrhosis (PBC; MIM 109720) show autoantibodies to DLAT. [supplied by OMIM].
Partner Proteins	PDHA1, PDHX, PDK1, PDK2, PDK3, PDK4, PDHB, PDHX, PDK1, PDK2, PDK3
Reconstitution and Storage	Add 100 ul of distilled water. Final anti-DLAT antibody concentration is 1 mg/ml in PBS buffer with 2% sucrose. For longer periods of storage, store at -20C. Avoid repeat freeze-thaw cycles.
Lead Time	Domestic: within 24 hours delivery International: 3-5 business days
Blocking Peptide	For anti-DLAT antibody is Catalog # AAP41994 (Previous Catalog # AAPS11311)
Immunogen	The immunogen for anti-DLAT antibody: synthetic peptide directed towards the N terminal of human DLAT
Swissprot Id	P10515
Protein Name	Dihydrolipoyllysine-residue acetyltransferase component of pyruvate dehydrogenase complex, mitochondrial
Protein Accession #	NP_001922
Purification	Protein A purified
Species Reactivity	Human, Dog, Bovine, Pig, Horse, Rabbit, Rat, Guinea pig, Mouse, Zebrafish
Application	IHC, WB
Predicted Homology Based on Immunogen Sequence	Dog: 100%; Pig: 100%; Rat: 100%; Horse: 100%; Human: 100%; Mouse: 100%; Bovine: 100%; Rabbit: 100%; Guinea pig: 100%; Zebrafish: 86%

Human Jurkat

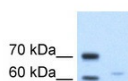
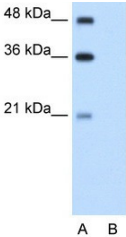
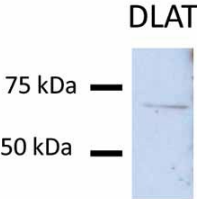


Image 1	<div data-bbox="627 73 753 309"></div> <div data-bbox="952 96 1447 181">WB Suggested Anti-DLAT Antibody Titration: 5.0ug/ml Positive Control: Jurkat cell lysate</div>
Image 2	<div data-bbox="406 624 639 651">Human Huh7, HepG2</div> <div data-bbox="521 719 719 916"></div> <div data-bbox="952 763 1329 873">Sample Type: Huh7 lysate (50ug) Primary Antibody Dilution: 1:200 Image Submitted By: Partha Kasturi University of Kansas Medical Center</div> <div data-bbox="740 981 925 994">See Immunoblot 2 for more information.</div>
Image 3	<div data-bbox="406 1032 571 1059">Human Kidney</div> <div data-bbox="406 1061 962 1417"></div> <div data-bbox="967 1144 1394 1305">Rabbit Anti-DLAT Antibody Catalog Number: ARP41994 Paraffin Embedded Tissue: Human Kidney Cellular Data: Epithelial cells of renal tubule Antibody Concentration: 4.0-8.0 ug/ml Magnification: 400X</div>

This product is for Research Use Only. Not for diagnostic, human, or veterinary use.
Optimal conditions of its use should be determined by end users.