

FBLN1 antibody - N-terminal region (ARP42000_P050)

Data Sheet

| | |
|---|---|
| Product Number | ARP42000_P050 |
| Product Name | FBLN1 antibody - N-terminal region (ARP42000_P050) |
| Size | 50ug |
| Gene Symbol | FBLN1 |
| Alias Symbols | FBLN; FBL1 |
| Nucleotide Accession# | NM_001996 |
| Protein Size (# AA) | 683 amino acids |
| Molecular Weight | 72kDa |
| Product Format | Lyophilized powder |
| NCBI Gene Id | 2192 |
| Host | Rabbit |
| Clonality | Polyclonal |
| Official Gene Full Name | Fibulin 1 |
| Gene Family | FBLN |
| Description | This is a rabbit polyclonal antibody against FBLN1. It was validated on Western Blot using a cell lysate as a positive control. Aviva Systems Biology strives to provide antibodies covering each member of a whole protein family of your interest. We also use our best efforts to provide you antibodies recognize various epitopes of a target protein. For availability of antibody needed for your experiment, please inquire (). |
| Peptide Sequence | Synthetic peptide located within the following region: CCVKSQETGDLGVGGLQETDKIEVEEEQEDPYLNDRCRGGGPCKQQCRD |
| Target Reference | Xie,L., (2008) Exp. Biol. Med. (Maywood) 233 (2), 155-162 |
| Description of Target | Fibulin 1 is a secreted glycoprotein that becomes incorporated into a fibrillar extracellular matrix. Calcium-binding is apparently required to mediate its binding to laminin and nidogen. It mediates platelet adhesion via binding fibrinogen. Four splice v |
| Partner Proteins | NRP1, API5, CD44, CEP57, CSNK2A1, CSNK2A2, CSNK2B, CXCL13, FGF2, FGFBP1, FGFR1, FGFR3, FGFR4, FGFR1, GPC3, GPC4, HSPG2, NRP1, PF4, PRMT1, PTX3, RPL6, RPS19, RPS6KA3, SDC1, SDC2, SDC3, VTN, CSNK2A1, CSNK2A2, CSNK2B, FGFBP1, FGFR1, GPC3, GPC4, RPL6, RPS19, SDC1, SDC2, SDC3, SDC4, VTN |
| Reconstitution and Storage | Add 50 ul of distilled water. Final anti-FBLN1 antibody concentration is 1 mg/ml in PBS buffer with 2% sucrose. For longer periods of storage, store at -20C. Avoid repeat freeze-thaw cycles. |
| Lead Time | Domestic: within 24 hours delivery International: 3-5 business days |
| Blocking Peptide | For anti-FBLN1 antibody is Catalog # AAP42000 (Previous Catalog # AAPS11405) |
| Immunogen | The immunogen for anti-FBLN1 antibody: synthetic peptide directed towards the N terminal of human FBLN1 |
| Swissprot Id | P23142-4 |
| Protein Name | Fibulin-1 |
| Protein Accession # | NP_001987 |
| Purification | Affinity Purified |
| Species Reactivity | Human, Rat, Guinea pig, Bovine, Dog, Horse, Mouse, Yeast |
| Application | WB |
| Predicted Homology Based on Immunogen Sequence | Pig: 100%; Rat: 100%; Human: 100%; Guinea pig: 100%; Dog: 93%; Horse: 93%; Bovine: 93%; Mouse: 92%; Yeast: 83% |

Human OVCAR-3

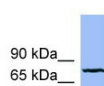


Image 1

40 kDa__

31 kDa__

22 kDa__



WB Suggested Anti-FBLN1 Antibody Titration: 0.2-1 ug/ml
ELISA Titer: 1:62500
Positive Control: OVCAR-3 cell lysate

This product is for Research Use Only. Not for diagnostic, human, or veterinary use.
Optimal conditions of its use should be determined by end users.