

KIR2DL4 antibody - middle region (ARP42025_P050)

Data Sheet

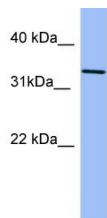
Product Number	ARP42025_P050
Product Name	KIR2DL4 antibody - middle region (ARP42025_P050)
Size	50ug
Gene Symbol	KIR2DL4
Alias Symbols	CD158D; G9P; KIR103; KIR103AS
Nucleotide Accession#	NM_001080772
Protein Size (# AA)	273 amino acids
Molecular Weight	30kDa
Product Format	Lyophilized powder
NCBI Gene Id	3805
Host	Rabbit
Clonality	Polyclonal
Official Gene Full Name	Killer cell immunoglobulin-like receptor, two domains, long cytoplasmic tail, 4
Gene Family	CD
Description	This is a rabbit polyclonal antibody against KIR2DL4. It was validated on Western Blot using a cell lysate as a positive control. Aviva Systems Biology strives to provide antibodies covering each member of a whole protein family of your interest. We also use our best efforts to provide you antibodies recognize various epitopes of a target protein. For availability of antibody needed for your experiment, please inquire ().
Peptide Sequence	Synthetic peptide located within the following region: VSVTGNPSSSWPSPTEPSFKTGARHLHAVIRYSVAIIILFTILPFFLLHR
Target Reference	Schellekens,J., (2008) Mol. Immunol. 45 (7), 1900-1906
Description of Target	Killer cell immunoglobulin-like receptors (KIRs) are transmembrane glycoproteins expressed by natural killer cells and subsets of T cells. The KIR genes are polymorphic and highly homologous and they are found in a cluster on chromosome 19q13.4 within the
Partner Proteins	ANXA1, BYSL, DEDD, DMD, EGFR, FGFR3, HSPA5, KRT18, MAPK1, MAPK14, MAPK3, MAPK8, PKD1, PKP1, PLAT, PNN, RAF1, TCHP, ANXA1, BYSL, CLN5, FGFR3, GRB2, HSPA4L, HSPA5, KRT17, KRT18, MAPK1, MAPK14, OTUD4, PKP1, PLAT, PNN, PPL, PRKCE, TROAP, USP32
Reconstitution and Storage	Add 50 ul of distilled water. Final anti-KIR2DL4 antibody concentration is 1 mg/ml in PBS buffer with 2% sucrose. For longer periods of storage, store at -20C. Avoid repeat freeze-thaw cycles.
Lead Time	Domestic: within 24 hours delivery International: 3-5 business days
Blocking Peptide	For anti-KIR2DL4 antibody is Catalog # AAP42025 (Previous Catalog # AAPP24506)
Immunogen	The immunogen for anti-KIR2DL4 antibody: synthetic peptide directed towards the middle region of human KIR2DL4
Swissprot Id	Q8NWK1
Protein Name	Killer cell immunoglobulin-like receptor KIR2DL4 EMBL AAG44820.1
Protein Accession #	NP_001074241
Purification	Affinity Purified
Species Reactivity	Human
Application	WB
Predicted Homology Based on Immunogen Sequence	Human: 100%

Human Thymus

90 kDa
65 kDa



Image 1



WB Suggested Anti-KIR2DL4 Antibody Titration:
0.2-1 ug/ml
ELISA Titer: 1:312500
Positive Control: Human Thymus

This product is for Research Use Only. Not for diagnostic, human, or veterinary use.
Optimal conditions of its use should be determined by end users.