

MGMT antibody - middle region (ARP42038_P050)

Data Sheet

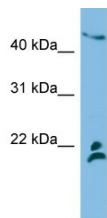
Product Number	ARP42038_P050
Product Name	MGMT antibody - middle region (ARP42038_P050)
Size	50ug
Gene Symbol	MGMT
Alias Symbols	-
Nucleotide Accession#	NM_002412
Protein Size (# AA)	207 amino acids
Molecular Weight	22kDa
Product Format	Lyophilized powder
NCBI Gene Id	4255
Host	Rabbit
Clonality	Polyclonal
Official Gene Full Name	O-6-methylguanine-DNA methyltransferase
Description	This is a rabbit polyclonal antibody against MGMT. It was validated on Western Blot using a cell lysate as a positive control. Aviva Systems Biology strives to provide antibodies covering each member of a whole protein family of your interest. We also use our best efforts to provide you antibodies recognize various epitopes of a target protein. For availability of antibody needed for your experiment, please inquire ().
Peptide Sequence	Synthetic peptide located within the following region: ISYQQLAALAGNPKAARAVGGAMRGNPVPILPCHRVVCSSGAVGNYSGG
Description of Target	MGMT is involved in the cellular defense against the biological effects of O6-methylguanine (O6-MeG) in DNA. MGMT repairs alkylated guanine in DNA by stoichiometrically transferring the alkyl group at the O-6 position to a cysteine residue in the enzyme. This is a suicide reaction: the enzyme is irreversibly inactivated.
Partner Proteins	CREBBP, CSNK2A1, EP300, PRKACA, PRKCA, UBA1, HIST4H4, CREBBP, CSNK2A1, CSNK2A2, EP300, ESR1, PRKACA, PRKCA
Reconstitution and Storage	Add 50 ul of distilled water. Final anti-MGMT antibody concentration is 1 mg/ml in PBS buffer with 2% sucrose. For longer periods of storage, store at -20C. Avoid repeat freeze-thaw cycles.
Lead Time	Domestic: within 24 hours delivery International: 3-5 business days
Blocking Peptide	For anti-MGMT antibody is Catalog # AAP42038 (Previous Catalog # AAPP24519)
Immunogen	The immunogen for anti-MGMT antibody: synthetic peptide directed towards the middle region of human MGMT
Swissprot Id	P16455
Protein Name	Methylated-DNA--protein-cysteine methyltransferase
Protein Accession #	NP_002403
Purification	Affinity Purified
Species Reactivity	Human, Dog, Horse, Rat, Guinea pig, Mouse, Rabbit, Yeast
Application	WB
Predicted Homology Based on Immunogen Sequence	Dog: 100%; Pig: 100%; Rat: 100%; Horse: 100%; Human: 100%; Mouse: 100%; Rabbit: 100%; Guinea pig: 100%; Yeast: 79%

A549

90 kDa
65 kDa



Image 1



WB Suggested Anti-MGMT Antibody Titration: 0.2-
1 ug/ml
ELISA Titer: 1:12500
Positive Control: A549 cell lysate

This product is for Research Use Only. Not for diagnostic, human, or veterinary use.
Optimal conditions of its use should be determined by end users.