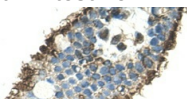

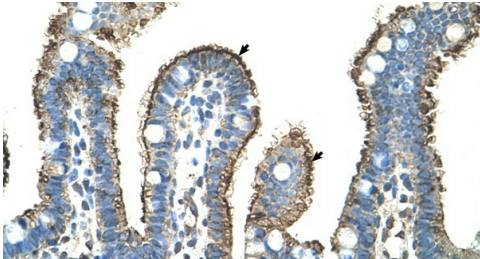
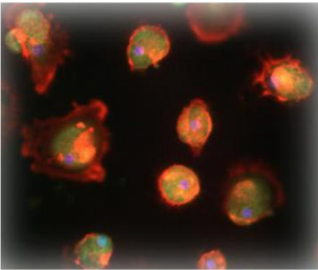
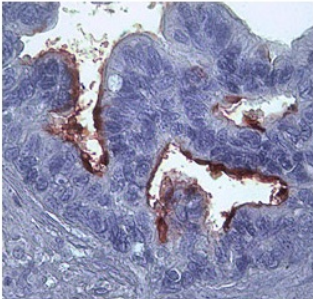
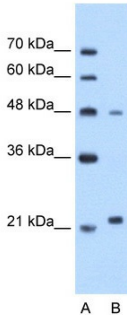
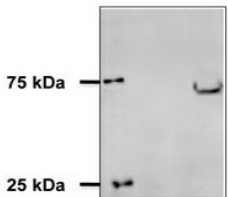


# MMP1 antibody - N-terminal region (ARP42039\_T100)

## Data Sheet

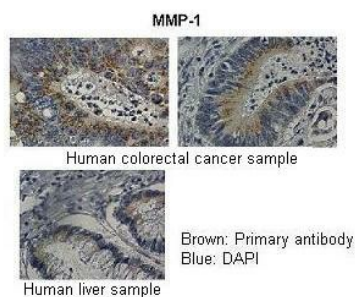
|   |  |
|---|--|
| <b>Product Number</b>                                 | ARP42039_T100  |
| <b>Product Name</b>                                   | MMP1 antibody - N-terminal region (ARP42039_T100)  |
| <b>Size</b>   | 100ug  |
| <b>Gene Symbol</b>                                    | <a href="#">MMP1</a>   |
| <b>Alias Symbols</b>                                  | CLG; CLGN  |
| <b>Nucleotide Accession#</b>                          | <a href="#">NM_002421</a>  |
| <b>Protein Size (# AA)</b>                            | 469 amino acids  |
| <b>Molecular Weight</b>                               | 52kDa  |
| <b>Product Format</b>                                 | Lyophilized powder   |
| <b>NCBI Gene Id</b>                                   | 4312   |
| <b>Host</b>   | Rabbit   |
| <b>Clonality</b>                                      | Polyclonal   |
| <b>Official Gene Full Name</b>                        | Matrix metalloproteinase 1 (interstitial collagenase)  |
| <b>Gene Family</b>                                    | ENDOLIG  |
| <b>Description</b>                                    | This is a rabbit polyclonal antibody against MMP1. It was validated on Western Blot and immunohistochemistry by Aviva Systems Biology. At Aviva Systems Biology we manufacture rabbit polyclonal antibodies on a large scale (200-1000 products/month) of high throughput manner. Our antibodies are peptide based and protein family oriented. We usually provide antibodies covering each member of a whole protein family of your interest. We also use our best efforts to provide you antibodies recognize various epitopes of a target protein. For availability of antibody needed for your experiment, please inquire ().  |
| <b>Peptide Sequence</b>                               | Synthetic peptide located within the following region:<br><a href="#">PATLETQEQDVLVQKYLEKYNNLKNLGRQVEKRRNSGPVVEKLKQMGEF</a>  |
| <b>Target Reference</b>                               | Montero, I., (2006) J. Am. Coll. Cardiol. 47 (7), 1369-1378  |
| <b>Description of Target</b>                          | Proteins of the matrix metalloproteinase (MMP) family are involved in the breakdown of extracellular matrix in normal physiological processes, such as embryonic development, reproduction, and tissue remodeling, as well as in disease processes, such as arthritis and metastasis. Most MMP's are secreted as inactive proproteins which are activated when cleaved by extracellular proteinases. MMP1 is a secreted enzyme which breaks down the interstitial collagens, types I, II, and III. Proteins of the matrix metalloproteinase (MMP) family are involved in the breakdown of extracellular matrix in normal physiological processes, such as embryonic development, reproduction, and tissue remodeling, as well as in disease processes, such as arthritis and metastasis. Most MMP's are secreted as inactive proproteins which are activated when cleaved by extracellular proteinases. This gene encodes a secreted enzyme which breaks down the interstitial collagens, types I, II, and III. The gene is part of a cluster of MMP genes which localize to chromosome 11q22.3. |
| <b>Partner Proteins</b>                               | F2R, ACAN, BSG, CCL13, CCL2, CCL7, CD44, CMA1, COL2A1, IGFBP3, ITGA2, MMP7, SERPINA3, TFPI, TIMP1, TNFSF11, BCAN, BSG, ITGA2, TIMP1  |
| <b>Reconstitution and Storage</b>                     | Add 100 ul of distilled water. Final anti-MMP1 antibody concentration is 1 mg/ml in PBS buffer with 2% sucrose. For longer periods of storage, store at -20C. Avoid repeat freeze-thaw cycles.   |
| <b>Lead Time</b>                                      | Domestic: within 24 hours delivery International: 3-5 business days  |
| <b>Blocking Peptide</b>                               | For anti-MMP1 antibody is Catalog # AAP42039 (Previous Catalog # AAPP24520)  |
| <b>Immunogen</b>                                      | The immunogen for anti-MMP1 antibody: synthetic peptide directed towards the N terminal of human MMP1  |
| <b>Swissprot Id</b>                                   | <a href="#">P03956</a>   |
| <b>Protein Name</b>                                   | Interstitial collagenase   |
| <b>Protein Accession #</b>                            | <a href="#">NP_002412</a>  |
| <b>Purification</b>                                   | Protein A purified   |
| <b>Species Reactivity</b>                             | Human, Horse   |
| <b>Application</b>                                    | IHC, WB  |
| <b>Predicted Homology Based on Immunogen Sequence</b> | Human: 100%; Horse: 77%  |
|   |  |
|   | <b>Human Intestine</b><br>  <b>Rabbit Anti-MMP1 Antibody</b>   |

|                       |  |
|-----------------------|--|
| <p><b>Image 1</b></p> |  <p> <b>Human Intestine</b><br/>           Catalog Number: ARP42039<br/>           Paraffin Embedded Tissue: Human Intestine<br/>           Cellular Data: Epithelial cells of intestinal villas<br/>           Antibody Concentration: 4.0-8.0 ug/ml<br/>           Magnification: 400X         </p>                              |
| <p><b>Image 2</b></p> | <p><b>Human Macrophages</b></p> <p><b>MMP1</b></p>  <p>           species sample : Human<br/>           cell/tissue : macrophagesHuman macrophages<br/>           dilution : 1/200         </p> <p><small>See Immunohistochemistry Data 1 for more information.</small></p>   |
| <p><b>Image 3</b></p> | <p><b>Human Intestine</b></p>  <p>           Antibody Titration: 2-10ug/ml<br/> <b>Positive Control:</b> Human Intestine cell lysate         </p>  |
| <p><b>Image 4</b></p> | <p><b>Human Jurkat</b></p>  <p> <b>WB Suggested Anti-MMP1 Antibody Titration:</b><br/>           1.25ug/ml<br/> <b>Positive Control:</b> Jurkat cell lysate         </p>  |
|                       |  |
|                       | <p><b>Equine cartilage explants</b></p>  <p> <b>Sample Type:</b> Equine Cartilage Explants<br/> <b>Primary Dilution:</b> 1:800<br/> <b>Secondary Antibody:</b> Bio-Rad 170-5046<br/> <b>Secondary Dilution:</b> 1:100,000<br/>           Image Submitted By: Adam Williams<br/>           University of Nottingham         </p> |

Equine  
Cartilage  
Secretome  
(Cytokine  
Stimulated)

Image 5

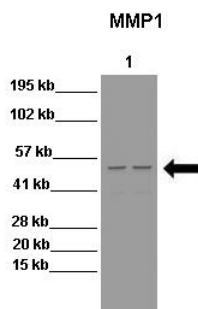
Image 6

**Human**

Human Colorectal cancer sample  
Human Liver Sample

See IHC 4 Data and Customer Feedback for more information

Image 7

**HT29****WB Suggested Anti-MMP1 Antibody**

**Positive Control:** Lane 1: 15ug HT29 cell lysate Lane 2: 15ug HT29 cell lysate

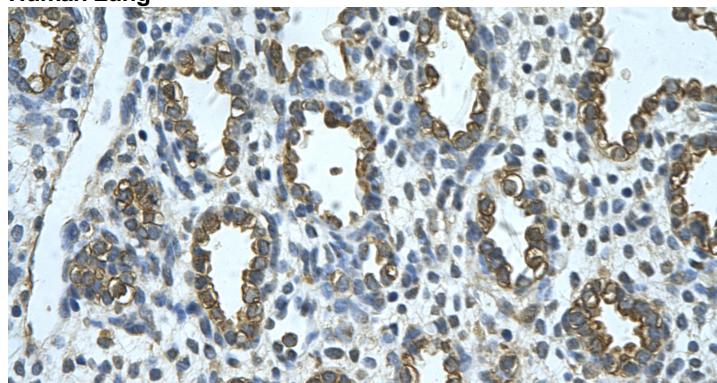
**Primary Antibody Dilution :** 1:500

**Secondary Antibody :** Anti-rabbit-HRP

**Secondary Antibody Dilution :** 1:2000

**Submitted by:** Zhongsheng Peng, School of Medicine, University of Maryland Baltimore

Image 8

**Human Lung****Rabbit Anti-MMP1 Antibody**

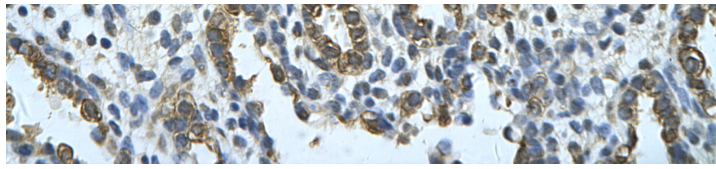
**Catalog Number:** ARP42039

**Paraffin Embedded Tissue:**

Human alveolar cell  
**Cellular Data:** Epithelial cells of renal tubule

**Antibody Concentration:** 4.0-8.0 ug/ml

**Magnification:** 400X



---

This product is for Research Use Only. Not for diagnostic, human, or veterinary use.  
Optimal conditions of its use should be determined by end users.