

PLIN antibody - N-terminal region (ARP42057_T100)

Data Sheet

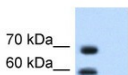
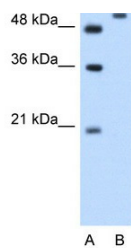
Product Number	ARP42057_T100
Product Name	PLIN antibody - N-terminal region (ARP42057_T100)
Size	100ug
Gene Symbol	PLIN1
Alias Symbols	PER1; PLIN; FPLD4
Nucleotide Accession#	NM_002666
Protein Size (# AA)	522 amino acids
Molecular Weight	57kDa
Product Format	Lyophilized powder
NCBI Gene Id	5346
Host	Rabbit
Clonality	Polyclonal
Official Gene Full Name	Perilipin 1
Gene Family	PLIN
Description	This is a rabbit polyclonal antibody against PLIN. It was validated on Western Blot using a cell lysate as a positive control. Aviva Systems Biology strives to provide antibodies covering each member of a whole protein family of your interest. We also use our best efforts to provide you antibodies recognize various epitopes of a target protein. For availability of antibody needed for your experiment, please inquire ().
Peptide Sequence	Synthetic peptide located within the following region: STQFTAANELACRGLDHLLEEKIPALQYPPEKIASLKDITSTRLSARNS
Target Reference	Moore,H.P., (2005) J. Biol. Chem. 280 (52), 43109-43120
Description of Target	PLIN coats lipid storage droplets in adipocytes, thereby protecting them until they can be broken down by hormone-sensitive lipase. The protein is the major cAMP-dependent protein kinase substrate in adipocytes and, when unphosphorylated, may play a role in the inhibition of lipolysis. The protein encoded by this gene coats lipid storage droplets in adipocytes, thereby protecting them until they can be broken down by hormone-sensitive lipase. The encoded protein is the major cAMP-dependent protein kinase substrate in adipocytes and, when unphosphorylated, may play a role in the inhibition of lipolysis.
Partner Proteins	AKT1, CASP6, COL17A1, EVPL, KAZ, OPRM1, PPHLN1, SKIL, USP7, VIM, COL17A1, EVPL, EZR, KAZ, KRT8, PPHLN1, VIM
Reconstitution and Storage	Add 100 ul of distilled water. Final anti-PLIN antibody concentration is 1 mg/ml in PBS buffer with 2% sucrose. For longer periods of storage, store at -20C. Avoid repeat freeze-thaw cycles.
Lead Time	Domestic: within 24 hours delivery International: 3-5 business days
Blocking Peptide	For anti-PLIN antibody is Catalog # AAP42057 (Previous Catalog # AAPP24536)
Immunogen	The immunogen for anti-PLIN antibody: synthetic peptide directed towards the N terminal of human PLIN
Swissprot Id	O60240
Protein Name	Perilipin-1
Protein Accession #	NP_002657
Purification	Protein A purified
Species Reactivity	Bovine, Sheep, Pig, Dog, Rat, Horse, Guinea pig, Human, Mouse, Zebrafish
Application	WB
Predicted Homology Based on Immunogen Sequence	Dog: 100%; Pig: 100%; Rat: 100%; Horse: 100%; Human: 100%; Mouse: 100%; Sheep: 100%; Bovine: 100%; Guinea pig: 100%; Zebrafish: 83%
	Human Jurkat 

Image 1



WB Suggested Anti-PLIN Antibody Titration:
1.25ug/ml
Positive Control: Jurkat cell lysate

This product is for Research Use Only. Not for diagnostic, human, or veterinary use.
Optimal conditions of its use should be determined by end users.