

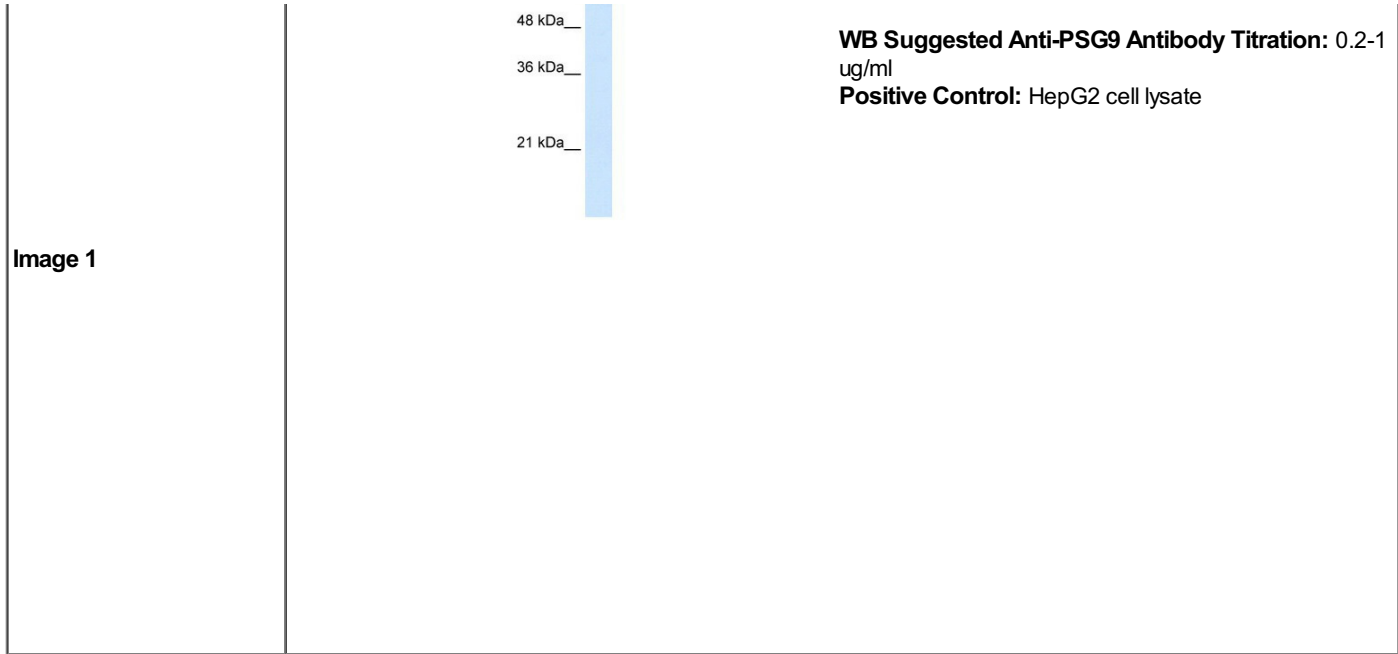
PSG9 antibody - N-terminal region (ARP42072_P050)

Data Sheet

Product Number	ARP42072_P050
Product Name	PSG9 antibody - N-terminal region (ARP42072_P050)
Size	50ug
Gene Symbol	PSG9
Alias Symbols	PSG11; PSGII; PS34; PSBG-9; PSBG-11
Nucleotide Accession#	NM_002784
Protein Size (# AA)	495 amino acids
Molecular Weight	54kDa
Product Format	Lyophilized powder
NCBI Gene Id	5678
Host	Rabbit
Clonality	Polyclonal
Official Gene Full Name	Pregnancy specific beta-1-glycoprotein 9
Gene Family	IGD
Description	This is a rabbit polyclonal antibody against PSG9. It was validated on Western Blot by Aviva Systems Biology. At Aviva Systems Biology we manufacture rabbit polyclonal antibodies on a large scale (200-1000 products/month) of high throughput manner. Our antibodies are peptide based and protein family oriented. We usually provide antibodies covering each member of a whole protein family of your interest. We also use our best efforts to provide you antibodies recognize various epitopes of a target protein. For availability of antibody needed for your experiment, please inquire ().
Peptide Sequence	Synthetic peptide located within the following region: YSNASLLIQNVTRK DAGTYTLHI I KRGDETREEIRHFTFTLYLETPKPYI
Description of Target	The function remains unknown.
Partner Proteins	BRMS1, BRMS1L, HDAC1, HDAC2, ING1, LRAT, LRP2, MED26, RBBP4, RBBP7, SAP30, SIN3A, LRP2
Reconstitution and Storage	Add 50 ul of distilled water. Final anti-PSG9 antibody concentration is 1 mg/ml in PBS buffer with 2% sucrose. For longer periods of storage, store at -20C. Avoid repeat freeze-thaw cycles.
Lead Time	Domestic: within 24 hours delivery International: 3-5 business days
Blocking Peptide	For anti-PSG9 antibody is Catalog # AAP42072 (Previous Catalog # AAPP12549)
Immunogen	The immunogen for anti-PSG9 antibody: synthetic peptide directed towards the N terminal of human PSG9
Swissprot Id	Q00887
Protein Name	Pregnancy-specific beta-1-glycoprotein 9
Protein Accession #	EAW57184
Purification	Affinity Purified
Species Reactivity	Human
Application	WB
Predicted Homology Based on Immunogen Sequence	Human: 100%

Human HepG2





This product is for Research Use Only. Not for diagnostic, human, or veterinary use.
Optimal conditions of its use should be determined by end users.