

SEMG1 antibody - C-terminal region (ARP42090_T100)

Data Sheet

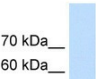
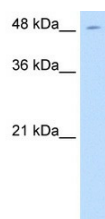
Product Number	ARP42090_T100
Product Name	SEMG1 antibody - C-terminal region (ARP42090_T100)
Size	100ug
Gene Symbol	SEMG1
Alias Symbols	MGC14719; SEMG; SGI; CT103; dJ172H20.2
Nucleotide Accession#	NM_003007
Protein Size (# AA)	462 amino acids
Molecular Weight	51kDa
Product Format	Lyophilized powder
NCBI Gene Id	6406
Host	Rabbit
Clonality	Polyclonal
Official Gene Full Name	Semenogelin I
Description	This is a rabbit polyclonal antibody against SEMG1. It was validated on Western Blot using a cell lysate as a positive control. Aviva Systems Biology strives to provide antibodies covering each member of a whole protein family of your interest. We also use our best efforts to provide you antibodies recognize various epitopes of a target protein. For availability of antibody needed for your experiment, please inquire ().
Peptide Sequence	Synthetic peptide located within the following region: GENGVQKDVSSQSIYSQTEEKAQGGKSQKQITIPSQEQEHSQKANKISYQS
Target Reference	Hienonen,T., (2005) Cancer Res. 65 (11), 4607-4613
Description of Target	SEMG1 is the predominant protein in semen. The secreted protein is involved in the formation of a gel matrix that encases ejaculated spermatozoa. The prostate-specific antigen (PSA) protease processes this protein into smaller peptides, with each possibly having a separate function. The proteolysis process breaks down the gel matrix and allows the spermatozoa to move more freely. The protein encoded by this gene is the predominant protein in semen. The encoded secreted protein is involved in the formation of a gel matrix that encases ejaculated spermatozoa. The prostate-specific antigen (PSA) protease processes this protein into smaller peptides, with each possibly having a separate function. The proteolysis process breaks down the gel matrix and allows the spermatozoa to move more freely. Two transcript variants encoding different isoforms have been found for this gene.
Reconstitution and Storage	Add 100 ul of distilled water. Final anti-SEMG1 antibody concentration is 1 mg/ml in PBS buffer with 2% sucrose. For longer periods of storage, store at -20C. Avoid repeat freeze-thaw cycles.
Lead Time	Domestic: within 24 hours delivery International: 3-5 business days
Blocking Peptide	For anti-SEMG1 antibody is Catalog # AAP42090 (Previous Catalog # AAP24569)
Immunogen	The immunogen for anti-SEMG1 antibody: synthetic peptide directed towards the C terminal of human SEMG1
Swissprot Id	P04279
Protein Name	Semenogelin-1
Protein Accession #	NP_002998
Purification	Protein A purified
Species Reactivity	Human, Pig
Application	WB
Predicted Homology Based on Immunogen Sequence	Human: 100%; Pig: 77%
	<p>Human Jurkat</p> 

Image 1



WB Suggested Anti-SEMG1 Antibody Titration:

1.25ug/ml

Positive Control: Jurkat cell lysate

This product is for Research Use Only. Not for diagnostic, human, or veterinary use.
Optimal conditions of its use should be determined by end users.