

TGM3 antibody - N-terminal region (ARP42111_P050)

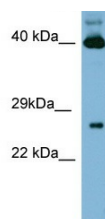
Data Sheet

Product Number	ARP42111_P050
Product Name	TGM3 antibody - N-terminal region (ARP42111_P050)
Size	50ug
Gene Symbol	TGM3
Alias Symbols	MGC126249; MGC126250; TGE
Nucleotide Accession#	NM_003245
Protein Size (# AA)	693 amino acids
Molecular Weight	77kDa
Product Format	Lyophilized powder
NCBI Gene Id	7053
Host	Rabbit
Clonality	Polyclonal
Official Gene Full Name	Transglutaminase 3 (E polypeptide, protein-glutamine-gamma-glutamyltransferase)
Gene Family	TGM
Description	This is a rabbit polyclonal antibody against TGM3. It was validated on Western Blot using a cell lysate as a positive control. Aviva Systems Biology strives to provide antibodies covering each member of a whole protein family of your interest. We also use our best efforts to provide you antibodies recognize various epitopes of a target protein. For availability of antibody needed for your experiment, please inquire ().
Peptide Sequence	Synthetic peptide located within the following region: MAALGVQSINWQTAFNRQAHHTDKFSSQELILRRGQNFQVLMIMNKGLGS
Target Reference	Zocchi, L., (2007) J. Invest. Dermatol. 127 (7), 1791-1794
Description of Target	Transglutaminases are enzymes that catalyze the crosslinking of proteins by epsilon-gamma glutamyl lysine isopeptide bonds. While the primary structure of transglutaminases is not conserved, they all have the same amino acid sequence at their active sites
Partner Proteins	ACTA1, CCDC85B, TNNC1, TNNT1, CCDC85B, PKD2L1, TNNC1
Reconstitution and Storage	Add 50 ul of distilled water. Final anti-TGM3 antibody concentration is 1 mg/ml in PBS buffer with 2% sucrose. For longer periods of storage, store at -20C. Avoid repeat freeze-thaw cycles.
Lead Time	Domestic: within 24 hours delivery International: 3-5 business days
Blocking Peptide	For anti-TGM3 antibody is Catalog # AAP42111 (Previous Catalog # AAPP24590)
Immunogen	The immunogen for anti-TGM3 antibody: synthetic peptide directed towards the N terminal of human TGM3
Swissprot Id	Q08188
Protein Name	Protein-glutamine gamma-glutamyltransferase E
Protein Accession #	NP_003236
Purification	Affinity Purified
Species Reactivity	Human, Rat, Dog, Mouse, Rabbit
Application	WB
Predicted Homology Based on Immunogen Sequence	Human: 100%; Dog: 86%; Rat: 86%; Mouse: 86%; Rabbit: 85%

Human PANC1



Image 1



WB Suggested Anti-TGM3 Antibody Titration: 0.2-1
ug/ml
ELISA Titer: 1:62500
Positive Control: PANC1 cell lysate

This product is for Research Use Only. Not for diagnostic, human, or veterinary use.
Optimal conditions of its use should be determined by end users.