

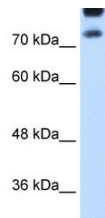
MTMR1 antibody - C-terminal region (ARP42149_T100)

Data Sheet

Product Number	ARP42149_T100
Product Name	MTMR1 antibody - C-terminal region (ARP42149_T100)
Size	100ug
Gene Symbol	MTMR1
Nucleotide Accession#	NM_003828
Protein Size (# AA)	665 amino acids
Molecular Weight	73kDa
Product Format	Lyophilized powder
NCBI Gene Id	8776
Host	Rabbit
Clonality	Polyclonal
Official Gene Full Name	Myotubularin related protein 1
Gene Family	DUSPM
Description	This is a rabbit polyclonal antibody against MTMR1. It was validated on Western Blot using a cell lysate as a positive control. Aviva Systems Biology strives to provide antibodies covering each member of a whole protein family of your interest. We also use our best efforts to provide you antibodies recognize various epitopes of a target protein. For availability of antibody needed for your experiment, please inquire ().
Peptide Sequence	Synthetic peptide located within the following region: KEDVYTKTISLWSYNSQLDEFSPFFVNYENHVLVPVASLSHLELVWNY
Target Reference	Yoshimura,A., (2002) Hum. Mol. Genet. 11 (19), 2297-2307
Description of Target	MTMR1 is a member of the myotubularin related family of proteins. Members of this family contain the consensus sequence for the active site of protein tyrosine phosphatases. This gene encodes a member of the myotubularin related family of proteins. Members of this family contain the consensus sequence for the active site of protein tyrosine phosphatases. Alternatively spliced variants have been described but their biological validity has not been determined.
Partner Proteins	CALM3, FBL, MAGEA6, PSMB1, PSMC4, RUVBL2, SSR4
Reconstitution and Storage	Add 100 ul of distilled water. Final anti-MTMR1 antibody concentration is 1 mg/ml in PBS buffer with 2% sucrose. For longer periods of storage, store at -20C. Avoid repeat freeze-thaw cycles.
Lead Time	Domestic: within 24 hours delivery International: 3-5 business days
Blocking Peptide	For anti-MTMR1 antibody is Catalog # AAP42149 (Previous Catalog # AAPS11810)
Immunogen	The immunogen for anti-MTMR1 antibody: synthetic peptide directed towards the C terminal of human MTMR1
Swissprot Id	Q13613
Protein Name	Myotubularin-related protein 1
Protein Accession #	NP_003819
Purification	Protein A purified
Species Reactivity	Human, Bovine, Pig, Horse, Rabbit, Rat, Guinea pig, Mouse, Dog
Application	WB
Predicted Homology Based on Immunogen Sequence	Pig: 100%; Rat: 100%; Horse: 100%; Human: 100%; Mouse: 100%; Bovine: 100%; Rabbit: 100%; Guinea pig: 100%; Dog: 93%

Human HepG2

Image 1



WB Suggested Anti-MTMR1 Antibody Titration:

1.25ug/ml

Positive Control: HepG2 cell lysate

This product is for Research Use Only. Not for diagnostic, human, or veterinary use.
Optimal conditions of its use should be determined by end users.