

CA8 antibody - N-terminal region (ARP42166_T100)

Data Sheet

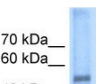
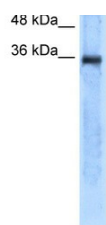
Product Number	ARP42166_T100
Product Name	CA8 antibody - N-terminal region (ARP42166_T100)
Size	100ug
Gene Symbol	CA8
Alias Symbols	CA-VIII; CALS; CARP; MGC120502; MGC99509; CAMRQ3
Nucleotide Accession#	NM_004056
Protein Size (# AA)	290 amino acids
Molecular Weight	32kDa
Product Format	Lyophilized powder
NCBI Gene Id	767
Host	Rabbit
Clonality	Polyclonal
Official Gene Full Name	Carbonic anhydrase VIII
Gene Family	CA
Description	This is a rabbit polyclonal antibody against CA8. It was validated on Western Blot using a cell lysate as a positive control. Aviva Systems Biology strives to provide antibodies covering each member of a whole protein family of your interest. We also use our best efforts to provide you antibodies recognize various epitopes of a target protein. For availability of antibody needed for your experiment, please inquire ().
Peptide Sequence	Synthetic peptide located within the following region: YEEGVWGLVFPDANGEYQSPINLNSREARYDPSLLDVRLSPNYVCRDC
Target Reference	Hirota,J., Biochem. J. 372 (PT 2), 435-441 (2003)
Description of Target	CA8 was initially named CA-related protein because of sequence similarity to other known carbonic anhydrase genes. However, CA8 lacks carbonic anhydrase activity (i.e., the reversible hydration of carbon dioxide). CA8 continues to carry a carbonic anhydrase designation based on clear sequence identity to other members of the carbonic anhydrase gene family. The protein encoded by this gene was initially named CA-related protein because of sequence similarity to other known carbonic anhydrase genes. However, the gene product lacks carbonic anhydrase activity (i.e., the reversible hydration of carbon dioxide). The gene product continues to carry a carbonic anhydrase designation based on clear sequence identity to other members of the carbonic anhydrase gene family. The absence of CA8 gene transcription in the cerebellum of the lurcher mutant in mice with a neurologic defect suggests an important role for this acatalytic form.
Partner Proteins	ITPR1, LRCH4, ITPR1, LRCH4
Reconstitution and Storage	Add 100 ul of distilled water. Final anti-CA8 antibody concentration is 1 mg/ml in PBS buffer with 2% sucrose. For longer periods of storage, store at -20C. Avoid repeat freeze-thaw cycles.
Lead Time	Domestic: within 24 hours delivery International: 3-5 business days
Blocking Peptide	For anti-CA8 antibody is Catalog # AAP42166 (Previous Catalog # AAPS12003)
Immunogen	The immunogen for anti-CA8 antibody: synthetic peptide directed towards the N terminal of human CA8
Swissprot Id	P35219
Protein Name	Carbonic anhydrase-related protein
Sample Type Confirmation	CA8 is supported by BioGPS gene expression data to be expressed in SKMEL2
Protein Accession #	NP_004047
Purification	Protein A purified
Species Reactivity	Bovine, Zebrafish, Dog, Pig, Horse, Rabbit, Rat, Guinea pig, Mouse, Human
Application	WB
Predicted Homology Based on Immunogen Sequence	Dog: 100%; Pig: 100%; Rat: 100%; Horse: 100%; Human: 100%; Mouse: 100%; Bovine: 100%; Rabbit: 100%; Zebrafish: 100%; Guinea pig: 100%
	<div>Human SK-MEL-2</div> <div>  </div> <div>WB Suggested Anti-CA8 Antibody Titration:</div>

Image 1



5.0ug/ml

Positive Control: SK-MEL-2 cell lysate

CA8 is supported by BioGPS gene expression data to be expressed in SKMEL2

This product is for Research Use Only. Not for diagnostic, human, or veterinary use.
Optimal conditions of its use should be determined by end users.