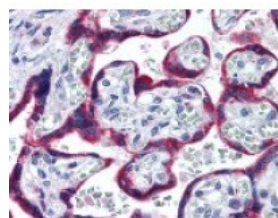




## HSP90B1 Antibody

CATALOG NUMBER: 48-947



Immunohistochemistry staining of HSP90B1 in placenta (formalin-fixed paraffin embedded) tissue using HSP90B1 Antibody.

### Specifications

<b>SPECIES REACTIVITY:</b>	Bovine, Chicken, Chimpanzee, Horse, Human, Monkey, Mouse, Rat, Xenopus, Zebrafish
<b>TESTED APPLICATIONS:</b>	IHC, WB
<b>APPLICATIONS:</b>	HSP90B1 antibody can be used in ELISA, Western Blot, and immunohistochemistry starting at 5 ug/mL.
<b>USER NOTE:</b>	Optimal dilutions for each application to be determined by the researcher.
<b>SPECIFICITY:</b>	A portion of amino acids 590-640 of human GRP94.
<b>IMMUNOGEN:</b>	A portion of amino acids 590-640 of human GRP94.
<b>HOST SPECIES:</b>	Rabbit

### Properties

<b>PURIFICATION:</b>	Protein G Column
<b>PHYSICAL STATE:</b>	Liquid
<b>BUFFER:</b>	PBS, 0.2% gelatin, 0.05% sodium azide.
<b>STORAGE CONDITIONS:</b>	HSP90B1 antibody can be stored short term 4 °C. For long term storage aliquot and store at -20 °C. As with all antibodies avoid freeze/thaw cycles.
<b>CLONALITY:</b>	Polyclonal
<b>ISOTYPE:</b>	IgG
<b>CONJUGATE:</b>	Unconjugated

### Additional Info

<b>ALTERNATE NAMES:</b>	HSP90B1, ECGP, Endoplasmin, gp96 homolog, gp96, GRP-94, GRP94, Tumor rejection antigen 1, TRA1
<b>ACCESSION NO.:</b>	P14625
<b>PROTEIN GI NO.:</b>	119360
<b>OFFICIAL SYMBOL:</b>	HSP90B1
<b>GENE ID:</b>	7184

