

Name: Rabbit polyclonal anti-ALDH3B1 antibody
Product Data Sheet - ANTIBODY**Catalog: TA313444**

Components:	• Rabbit polyclonal anti-ALDH3B1 antibody (TA313444)
Amount:	100ul
Immunogen:	The antiserum was produced against synthesized peptide derived from internal of human ALDH3B1.
Host:	Rabbit
Isotype:	IgG
Species Reactivity:	Human
Guaranteed Applications:	WB, IHC
Suggested Dilutions:	WB: 1:500~1:3000, IHC: 1:50~1:100, ELISA: 1:40000
Concentration:	1mg/ml
Buffer:	Phosphate buffered saline (without Mg ²⁺ and Ca ²⁺), pH 7.4, 150mM NaCl, 0.02% sodium azide and 50% glycerol.
Purification:	The antibody was affinity-purified from rabbit antiserum by affinity-chromatography using epitope-specific immunogen.
Storage Condition:	Shipped at -20C. Upon delivery store at -20C. Dilute in PBS (pH7.3) if necessary. Stable for 12 months from date of receipt. Avoid repeated freeze-thaws.

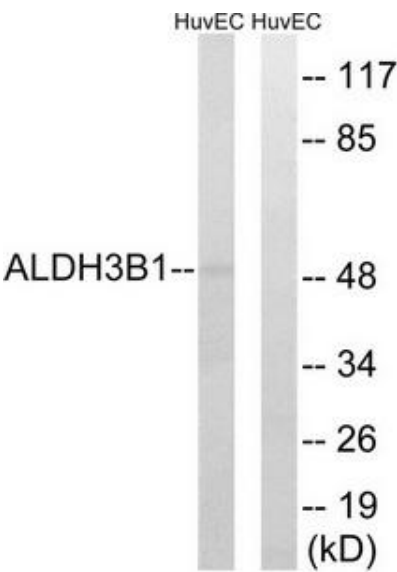
Target

Target Name:	Homo sapiens aldehyde dehydrogenase 3 family, member B1 (ALDH3B1), transcript variant 1
Alternative Name:	ALDH4; ALDH7
Database Link:	NP_000685
Function:	

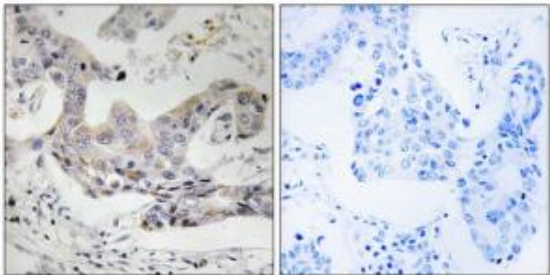
This product is to be used for laboratory only. Not for diagnostic or therapeutic use.

© 2014 OriGene Technologies, Inc. 9620 Medical Center Dr., Suite 200, Rockville, MD 20850

Validation Data



Western blot analysis of extracts from HuvEC cells, using ALDH3B1 antibody. The lane on the right is treated with the synthesized peptide.



Immunohistochemistry analysis of paraffin-embedded human breast carcinoma tissue, using ALDH3B1 antibody. The picture on the right is treated with the synthesized peptide.

* More validation images may be available on our website: <http://www.origene.com/antibody/TA313444.aspx>