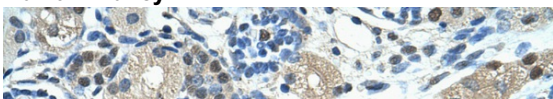


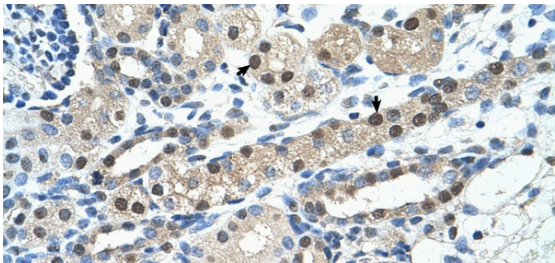
IGSF1 antibody - N-terminal region (ARP41953_T100)

Data Sheet

Product Number	ARP41953_T100
Product Name	IGSF1 antibody - N-terminal region (ARP41953_T100)
Size	100ug
Gene Symbol	IGSF1
Alias Symbols	IGCD1; IGDC1; INHBP; KIAA0364; MGC75490; PGSF2; p120
Nucleotide Accession#	NM_205833
Protein Size (# AA)	242 amino acids
Molecular Weight	27kDa
Product Format	Lyophilized powder
NCBI Gene Id	3547
Host	Rabbit
Clonality	Polyclonal
Official Gene Full Name	Immunoglobulin superfamily, member 1
Gene Family	IGD
Description	This is a rabbit polyclonal antibody against IGSF1. It was validated on Western Blot and immunohistochemistry by Aviva Systems Biology. At Aviva Systems Biology we manufacture rabbit polyclonal antibodies on a large scale (200-1000 products/month) of high throughput manner. Our antibodies are peptide based and protein family oriented. We usually provide antibodies covering each member of a whole protein family of your interest. We also use our best efforts to provide you antibodies recognize various epitopes of a target protein. For availability of antibody needed for your experiment, please inquire ().
Peptide Sequence	Synthetic peptide located within the following region: LCHGWLQDLVFMFLFKEGYAEPVDYQVPTGTMAIFSIDNLTPEDGVYICR
Target Reference	Tanaka,S., (2002) J. Mol. Endocrinol. 28 (1), 33-44
Description of Target	Members of the immunoglobulin (Ig) superfamily, which includes IGSF1, have a variety of functions, but all appear to play a role in cell recognition and the regulation of cell behavior.Members of the immunoglobulin (Ig) superfamily (see MIM 147100), which includes IGSF1, have a variety of functions, but all appear to play a role in cell recognition and the regulation of cell behavior.[supplied by OMIM].
Partner Proteins	ACVR1, ACVR1B, ACVR2A, ACVR2B, HECTD1, IGF1, INHBB, RANBP10, IGF1
Reconstitution and Storage	Add 100 ul of distilled water. Final anti-IGSF1 antibody concentration is 1 mg/ml in PBS buffer with 2% sucrose. For longer periods of storage, store at -20C. Avoid repeat freeze-thaw cycles.
Lead Time	Domestic: within 24 hours delivery International: 3-5 business days
Blocking Peptide	For anti-IGSF1 antibody is Catalog # AAP41953 (Previous Catalog # AAPP24489)
Immunogen	The immunogen for anti-IGSF1 antibody: synthetic peptide directed towards the N terminal of human IGSF1
Swissprot Id	Q8N6C5
Protein Name	Immunoglobulin superfamily member 1
Sample Type Confirmation	IGSF1 is supported by BioGPS gene expression data to be expressed in HepG2
Protein Accession #	NP_991402
Purification	Protein A purified
Species Reactivity	Bovine, Pig, Horse, Rabbit, Guinea pig, Human, Dog, Sheep, Mouse, Rat
Application	IHC, WB
Predicted Homology Based on Immunogen Sequence	Pig: 100%; Horse: 100%; Human: 100%; Bovine: 100%; Rabbit: 100%; Guinea pig: 100%; Dog: 93%; Mouse: 93%; Sheep: 93%; Rat: 86%
	Human Kidney 

Rabbit Anti-IGSF1 Antibody

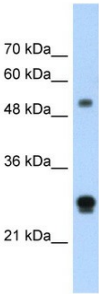
Image 1



Human Anti-IGSF1 Antibody
Catalog Number: ARP41953
Paraffin Embedded Tissue: Human Kidney
Cellular Data: Epithelial cells of renal tubule
Antibody Concentration: 4.0-8.0 ug/ml
Magnification: 400X

Image 2

Human HepG2



WB Suggested Anti-IGSF1 Antibody Titration:
1.25ug/ml
Positive Control: HepG2 cell lysate

IGSF1 is supported by BioGPS gene expression data to be expressed in HepG2