

IGSF1 antibody - middle region (ARP41955_P050)

Data Sheet


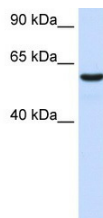
Product Number	ARP41955_P050
Product Name	IGSF1 antibody - middle region (ARP41955_P050)
Size	50ug
Gene Symbol	IGSF1
Alias Symbols	IGCD1; IGDC1; INHBP; KIAA0364; MGC75490; PGSF2; p120
Nucleotide Accession#	NM_001555
Protein Size (# AA)	1336 amino acids
Molecular Weight	149kDa
Product Format	Lyophilized powder
NCBI Gene Id	3547
Host	Rabbit
Clonality	Polyclonal
Official Gene Full Name	Immunoglobulin superfamily, member 1
Gene Family	IGD
Description	This is a rabbit polyclonal antibody against IGSF1. It was validated on Western Blot using a cell lysate as a positive control. Aviva Systems Biology strives to provide antibodies covering each member of a whole protein family of your interest. We also use our best efforts to provide you antibodies recognize various epitopes of a target protein. For availability of antibody needed for your experiment, please inquire ().
Peptide Sequence	Synthetic peptide located within the following region: PRLRTRGSETDGRDQTAL EECNQEGEPGTPANSPSSTSQRISVELPVP
Target Reference	Mehrle, A., Nucleic Acids Res. 34 (DATABASE ISSUE), D415-D418 (2006)
Description of Target	Members of the immunoglobulin (Ig) superfamily, which includes IGSF1, have a variety of functions, but all appear to play a role in cell recognition and the regulation of cell behavior. Members of the immunoglobulin (Ig) superfamily (see MIM 147100), which includes IGSF1, have a variety of functions, but all appear to play a role in cell recognition and the regulation of cell behavior.[supplied by OMIM]. PRIMARYREFSEQ_SPAN PRIMARY_IDENTIFIER PRIMARY_SPAN COMP 1-227 AB058894.2 1-227 228-250 Y10523.1 173-195 251-1082 BC063884.1 235-1066 1083-1084 Y10523.1 1028-1029 1085-2690 BC063884.1 1069-2674 2691-3713 AF034198.1 2661-3683 3714-4492 BC063884.1 3698-4476
Partner Proteins	ADRA1A, ARRB1, CXCL1, CXCL2, CXCL3, CXCL5, CXCL6, CXCR1, CXCR2, GNA14, GNA15, GNAI2, GNAI3, GPRASP1, GRIA1, IL8, MYO5B, PPBP, PPP2CA, RAB11FIP2, RGS12, ST13, ARRB1, CXCR2, GTF3A, IL8, MYO5B, RAB11FIP2, Rgs12
Reconstitution and Storage	Add 50 ul of distilled water. Final anti-IGSF1 antibody concentration is 1 mg/ml in PBS buffer with 2% sucrose. For longer periods of storage, store at -20C. Avoid repeat freeze-thaw cycles.
Lead Time	Domestic: within 24 hours delivery International: 3-5 business days
Blocking Peptide	For anti-IGSF1 antibody is Catalog # AAP41955 (Previous Catalog # AAPP24491)
Immunogen	The immunogen for anti-IGSF1 antibody: synthetic peptide directed towards the middle region of human IGSF1
Swissprot Id	Q8N6C5
Protein Name	Immunoglobulin superfamily member 1
Protein Accession #	NP_001546
Purification	Affinity Purified
Species Reactivity	Human, Horse, Rabbit, Guinea pig, Mouse, Rat
Application	WB
Predicted Homology Based on Immunogen Sequence	Human: 100%; Pig: 86%; Horse: 86%; Mouse: 86%; Rabbit: 86%; Guinea pig: 86%; Rat: 79%
	Human Liver 

Image 1



WB Suggested Anti-IGSF1 Antibody Titration: 0.2-1 ug/ml
ELISA Titer: 1:62500
Positive Control: Human Liver

This product is for Research Use Only. Not for diagnostic, human, or veterinary use.
Optimal conditions of its use should be determined by end users.