

KRT8 antibody - middle region (ARP42029_P050)

Data Sheet

Product Number	ARP42029_P050
Product Name	KRT8 antibody - middle region (ARP42029_P050)
Size	50ug
Gene Symbol	KRT8
Alias Symbols	CARD2; CK8; CYK8; K2C8; K8; KO; CK-8
Nucleotide Accession#	NM_002273
Protein Size (# AA)	483 amino acids
Molecular Weight	54kDa
Product Format	Lyophilized powder
NCBI Gene Id	3856
Host	Rabbit
Clonality	Polyclonal
Official Gene Full Name	Keratin 8
Gene Family	IFF2
Description	This is a rabbit polyclonal antibody against KRT8. It was validated on Western Blot using a cell lysate as a positive control. Aviva Systems Biology strives to provide antibodies covering each member of a whole protein family of your interest. We also use our best efforts to provide you antibodies recognize various epitopes of a target protein. For availability of antibody needed for your experiment, please inquire ().
Peptide Sequence	Synthetic peptide located within the following region: QSLAGKHGDDLRRTKTEISEMNRNISRLQAEIEGLKGQRASLEAAIADAE
Target Reference	Moon,M.C., (2008) Can. J. Physiol. Pharmacol. 86 (5), 223-231
Description of Target	KRT8 together with KRT19, help to link the contractile apparatus to dystrophin at the costameres of striated muscle.
Partner Proteins	KRT7
Reconstitution and Storage	Add 50 ul of distilled water. Final anti-KRT8 antibody concentration is 1 mg/ml in PBS buffer with 2% sucrose. For longer periods of storage, store at -20C. Avoid repeat freeze-thaw cycles.
Lead Time	Domestic: within 24 hours delivery International: 3-5 business days
Blocking Peptide	For anti-KRT8 antibody is Catalog # AAP42029 (Previous Catalog # AAPP24510)
Immunogen	The immunogen for anti-KRT8 antibody: synthetic peptide directed towards the middle region of human KRT8
Swissprot Id	P05787
Protein Name	Keratin, type II cytoskeletal 8
Sample Type Confirmation	KRT8 is supported by BioGPS gene expression data to be expressed in HepG2, MCF7
Protein Accession #	NP_002264
Purification	Affinity Purified
Species Reactivity	Pig, Human, Bovine, Dog, Horse, Rat, Guinea pig, Mouse, Rabbit
Application	IHC, WB
Predicted Homology Based on Immunogen Sequence	Pig: 100%; Human: 100%; Dog: 93%; Rat: 93%; Horse: 93%; Mouse: 93%; Bovine: 93%; Guinea pig: 93%; Rabbit: 86%

Human Small intestine

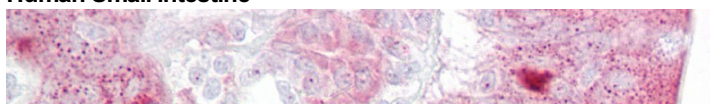
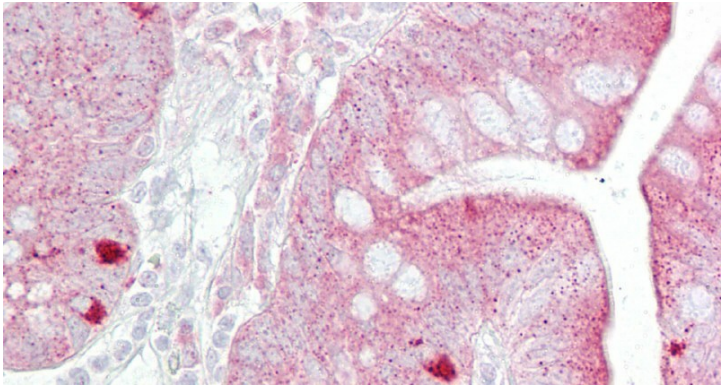


Image 1

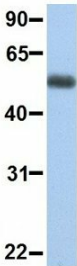


Immunohistochemistry with Small intestine tissue at an antibody concentration of 5ug/ml using anti-KRT8 antibody (ARP42029_P050)

Image 2

Hum. Adult Placenta

KRT8



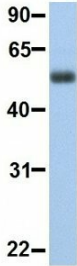
Rabbit Anti-KRT8
Sample Type: Human Adult Placenta
Antibody Concentration: 1ug/mL

Host:Rabbit
Target Name:KRT8
Sample Tissue:Human Adult Placenta
Antibody Dilution: 1.0ug/ml

Image 3

Hum. Fetal Heart

KRT8



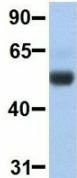
Rabbit Anti-KRT8
Sample Type: Human Fetal Heart
Antibody Concentration: 1ug/mL

Host:Rabbit
Target Name:KRT8
Sample Tissue:Human Fetal Heart
Antibody Dilution: 1.0ug/ml

Image 4

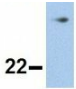
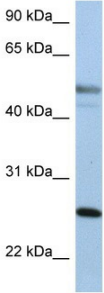

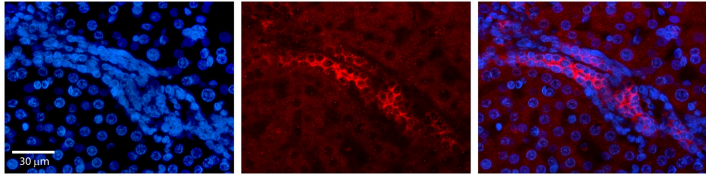
Hum. Fetal Lung

KRT8



Rabbit Anti-KRT8
Sample Type: Human Fetal Lung
Antibody Concentration: 1ug/mL

Host:Rabbit
Target Name:KRT8
Sample Tissue:Human Fetal Lung
Antibody Dilution: 1.0ug/ml

	 <p>Antibody Concentration: 1ug/mL</p> <p>22—</p>	
Image 5	<p>Human HepG2</p>  <p>90 kDa— 65 kDa— 40 kDa— 31 kDa— 22 kDa—</p> <p>WB Suggested Anti-KRT8 Antibody Titration: 0.2-1 ug/ml Positive Control: HepG2 cell lysate</p> <p>KRT8 is supported by BioGPS gene expression data to be expressed in HepG2</p>	
Image 6	<p>Human MCF7</p> <p>KRT8</p>  <p>90— 65— 40— 31— 22—</p> <p>Rabbit Anti-KRT8 Sample Type: Human MCF7 Antibody Concentration: 1ug/mL</p> <p>Host:Rabbit Target Name:KRT8 Sample Tissue:Human MCF7 Antibody Dilution: 1.0ug/ml</p> <p>KRT8 is supported by BioGPS gene expression data to be expressed in MCF7</p>	
Image 7	<p>Human Liver Tissue</p>  <p>30 μm</p> <p>KRT8 antibody - middle region (ARP42029_P050) Catalog Number: ARP42029_P050 Formalin Fixed Paraffin Embedded Tissue: Human Liver Tissue Observed Staining: Cytoplasm and membrane in epithelial cells of hepatic ducts Primary Antibody Concentration: 1:100 Secondary Antibody: Donkey anti-Rabbit-Cy3 Secondary Antibody Concentration: 1:200 Magnification: 20X Exposure Time: 0.5 - 2.0 sec</p>	