

KRT13 antibody - N-terminal region (ARP42030_P050)

Data Sheet

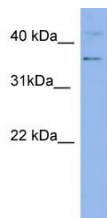
Product Number	ARP42030_P050
Product Name	KRT13 antibody - N-terminal region (ARP42030_P050)
Size	50ug
Gene Symbol	KRT13
Alias Symbols	CK13; K13; MGC161462; MGC3781
Nucleotide Accession#	NM_002274
Protein Size (# AA)	420 amino acids
Molecular Weight	46kDa
Product Format	Lyophilized powder
NCBI Gene Id	3860
Host	Rabbit
Clonality	Polyclonal
Official Gene Full Name	Keratin 13
Gene Family	IFF1
Description	This is a rabbit polyclonal antibody against KRT13. It was validated on Western Blot using a cell lysate as a positive control. Aviva Systems Biology strives to provide antibodies covering each member of a whole protein family of your interest. We also use our best efforts to provide you antibodies recognize various epitopes of a target protein. For availability of antibody needed for your experiment, please inquire ().
Peptide Sequence	Synthetic peptide located within the following region: TMQNLNDRSLASYLEKVRALFEANADLEVKIRDWHLKQSPASPERDYSPYY
Target Reference	Raspolini,M.R., (2007) Eur. J. Obstet. Gynecol. Reprod. Biol. 134 (2), 249-253
Description of Target	KRT13 is a member of the keratin gene family. The keratins are intermediate filament proteins responsible for the structural integrity of epithelial cells and are subdivided into cytokeratins and hair keratins. Most of the type I cytokeratins consist of a
Partner Proteins	KRT7
Reconstitution and Storage	Add 50 ul of distilled water. Final anti-KRT13 antibody concentration is 1 mg/ml in PBS buffer with 2% sucrose. For longer periods of storage, store at -20C. Avoid repeat freeze-thaw cycles.
Lead Time	Domestic: within 24 hours delivery International: 3-5 business days
Blocking Peptide	For anti-KRT13 antibody is Catalog # AAP42030 (Previous Catalog # AAPP24511)
Immunogen	The immunogen for anti-KRT13 antibody: synthetic peptide directed towards the N terminal of human KRT13
Swissprot Id	P13646-3
Protein Name	Keratin, type I cytoskeletal 13
Protein Accession #	NP_002265
Purification	Affinity Purified
Species Reactivity	Human, Horse, Dog, Pig, Mouse, Rat, Sheep, Bovine, Rabbit
Application	WB
Predicted Homology Based on Immunogen Sequence	Horse: 100%; Human: 100%; Dog: 93%; Pig: 93%; Mouse: 93%; Rat: 92%; Sheep: 92%; Bovine: 92%; Rabbit: 86%

Human NCI-H226

90 kDa
65 kDa



Image 1



WB Suggested Anti-KRT13 Antibody Titration: 0.2-1 ug/ml
ELISA Titer: 1:62500
Positive Control: NCI-H226 cell lysate

This product is for Research Use Only. Not for diagnostic, human, or veterinary use.
Optimal conditions of its use should be determined by end users.