

PSG5 antibody - N-terminal region (ARP42067_T100)

Data Sheet

Product Number	ARP42067_T100
Product Name	PSG5 antibody - N-terminal region (ARP42067_T100)
Size	100ug
Gene Symbol	PSG5
Alias Symbols	FL-NCA-3; PSG
Nucleotide Accession#	NM_002781
Protein Size (# AA)	335 amino acids
Molecular Weight	37kDa
Product Format	Lyophilized powder
NCBI Gene Id	5673
Host	Rabbit
Clonality	Polyclonal
Official Gene Full Name	Pregnancy specific beta-1-glycoprotein 5
Gene Family	IGD
Description	This is a rabbit polyclonal antibody against PSG5. It was validated on Western Blot using a cell lysate as a positive control. Aviva Systems Biology strives to provide antibodies covering each member of a whole protein family of your interest. We also use our best efforts to provide you antibodies recognize various epitopes of a target protein. For availability of antibody needed for your experiment, please inquire ().
Peptide Sequence	Synthetic peptide located within the following region: QLMDLYHYTSYVVDGQINYGPAYTGRETVYSNASLLIQNVREDAGSY
Target Reference	Blanchon,L., (2006) Biochem. Biophys. Res. Commun. 343 (3), 745-753
Description of Target	The pregnancy-specific beta 1 glycoprotein (PSG) is a group of heterogeneous proteins produced in large amounts by the human syncytiotrophoblast. They belong to the carcinoembryonic antigen (CEA) family. The function of PSG5 remains unknown.
Partner Proteins	PRPF40A
Reconstitution and Storage	Add 100 ul of distilled water. Final anti-PSG5 antibody concentration is 1 mg/ml in PBS buffer with 2% sucrose. For longer periods of storage, store at -20C. Avoid repeat freeze-thaw cycles.
Lead Time	Domestic: within 24 hours delivery International: 3-5 business days
Blocking Peptide	For anti-PSG5 antibody is Catalog # AAP42067 (Previous Catalog # AAPP24546)
Immunogen	The immunogen for anti-PSG5 antibody: synthetic peptide directed towards the N terminal of human PSG5
Swissprot Id	Q15238
Protein Name	Pregnancy-specific beta-1-glycoprotein 5
Protein Accession #	NP_002772
Purification	Protein A purified
Species Reactivity	Human, Mouse, Rat, Dog, Horse
Application	WB
Predicted Homology Based on Immunogen Sequence	Human: 100%; Rat: 85%; Mouse: 85%; Dog: 77%; Horse: 77%

Human Placenta

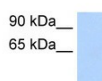
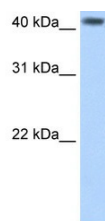


Image 1



WB Suggested Anti-PSG5 Antibody Titration:

2.5ug/ml

Positive Control: Human Placenta

This product is for Research Use Only. Not for diagnostic, human, or veterinary use.
Optimal conditions of its use should be determined by end users.