

Rasa1 antibody - C-terminal region (ARP42079_P050)

Data Sheet

Product Number	ARP42079_P050
Product Name	Rasa1 antibody - C-terminal region (ARP42079_P050)
Size	50ug
Gene Symbol	Rasa1
Alias Symbols	Gap; MGC7759; RasGAP; Rasa
Nucleotide Accession#	NM_145452
Protein Size (# AA)	813 amino acids
Molecular Weight	94kDa
Product Format	Lyophilized powder
NCBI Gene Id	218397
Host	Rabbit
Clonality	Polyclonal
Official Gene Full Name	RAS p21 protein activator 1
Gene Family	PLEKH
Description	This is a rabbit polyclonal antibody against Rasa1. It was validated on Western Blot by Aviva Systems Biology. At Aviva Systems Biology we manufacture rabbit polyclonal antibodies on a large scale (200-1000 products/month) of high throughput manner. Our antibodies are peptide based and protein family oriented. We usually provide antibodies covering each member of a whole protein family of your interest. We also use our best efforts to provide you antibodies recognize various epitopes of a target protein. For availability of antibody needed for your experiment, please inquire ().
Peptide Sequence	Synthetic peptide located within the following region: SNKHRMIMFLDELGNVPELPDTTEHSRTDLSRDLAALHEICVAHSDELRT
Description of Target	The function of this protein remains unknown.
Partner Proteins	Dok1, Ephb2, Arhgap5, Dok1, Dok1, Dok2, Grf1
Reconstitution and Storage	Add 50 ul of distilled water. Final anti-Rasa1 antibody concentration is 1 mg/ml in PBS buffer with 2% sucrose. For longer periods of storage, store at -20C. Avoid repeat freeze-thaw cycles.
Lead Time	Domestic: within 24 hours delivery International: 3-5 business days
Blocking Peptide	For anti-Rasa1 antibody is Catalog # AAP42079 (Previous Catalog # AAPP24558)
Immunogen	The immunogen for anti-Rasa1 antibody: synthetic peptide corresponding to a region of Mouse
Swissprot Id	Q91YX7
Protein Name	RAS p21 protein activator 1 EMBL AAH13637.1
Protein Accession #	NP_663427
Purification	Affinity Purified
Species Reactivity	Human, Mouse, Dog, Pig, Horse, Rabbit, Rat, Guinea pig, Bovine, Zebrafish
Application	WB
Predicted Homology Based on Immunogen Sequence	Dog: 100%; Pig: 100%; Rat: 100%; Horse: 100%; Human: 100%; Mouse: 100%; Rabbit: 100%; Guinea pig: 100%; Bovine: 93%; Zebrafish: 85%

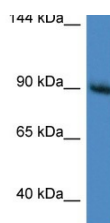
Mouse Brain

168 kDa

44 kDa



Image 1



WB Suggested Anti-Rasa1 Antibody
Titration: 1.0 ug/ml
Positive Control: Mouse Brain

This product is for Research Use Only. Not for diagnostic, human, or veterinary use.
Optimal conditions of its use should be determined by end users.