

# UGCG antibody - N-terminal region (ARP42123\_P050)

## Data Sheet

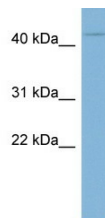
<b>Product Number</b>	ARP42123_P050
<b>Product Name</b>	UGCG antibody - N-terminal region (ARP42123_P050)
<b>Size</b>	50ug
<b>Gene Symbol</b>	<a href="#">UGCG</a>
<b>Alias Symbols</b>	GCS; GLCT1
<b>Nucleotide Accession#</b>	<a href="#">NM_003358</a>
<b>Protein Size (# AA)</b>	394 amino acids
<b>Molecular Weight</b>	45kDa
<b>Product Format</b>	Lyophilized powder
<b>NCBI Gene Id</b>	7357
<b>Host</b>	Rabbit
<b>Clonality</b>	Polyclonal
<b>Official Gene Full Name</b>	UDP-glucose ceramide glucosyltransferase
<b>Gene Family</b>	GLT2
<b>Description</b>	This is a rabbit polyclonal antibody against UGCG. It was validated on Western Blot using a cell lysate as a positive control. Aviva Systems Biology strives to provide antibodies covering each member of a whole protein family of your interest. We also use our best efforts to provide you antibodies recognize various epitopes of a target protein. For availability of antibody needed for your experiment, please inquire ().
<b>Peptide Sequence</b>	Synthetic peptide located within the following region: <a href="#">LHLNKKATDKQPYSKLPGVSLKPLKGVDPNLINNLETFELDYPKYEVL</a>
<b>Target Reference</b>	Xie,P., (2008) Leuk. Res. 32 (3), 475-480
<b>Description of Target</b>	Glycosphingolipids (GSLs) are a group of membrane components that contain lipid and sugar moieties. They are present in essentially all animal cells and are believed to have important roles in various cellular processes. UDP-glucose ceramide glucosyltrans
<b>Partner Proteins</b>	VIM, VIM
<b>Reconstitution and Storage</b>	Add 50 ul of distilled water. Final anti-UGCG antibody concentration is 1 mg/ml in PBS buffer with 2% sucrose. For longer periods of storage, store at -20C. Avoid repeat freeze-thaw cycles.
<b>Lead Time</b>	Domestic: within 24 hours delivery International: 3-5 business days
<b>Blocking Peptide</b>	For anti-UGCG antibody is Catalog # AAP42123 (Previous Catalog # AAPS11608)
<b>Immunogen</b>	The immunogen for anti-UGCG antibody: synthetic peptide directed towards the N terminal of human UGCG
<b>Swissprot Id</b>	<a href="#">Q16739</a>
<b>Protein Name</b>	Ceramide glucosyltransferase
<b>Protein Accession #</b>	<a href="#">NP_003349</a>
<b>Purification</b>	Affinity Purified
<b>Species Reactivity</b>	Dog, Zebrafish, Pig, Horse, Rabbit, Guinea pig, Mouse, Bovine, Human, Rat, Yeast
<b>Application</b>	WB
<b>Predicted Homology Based on Immunogen Sequence</b>	Dog: 100%; Pig: 100%; Rat: 100%; Horse: 100%; Human: 100%; Mouse: 100%; Bovine: 100%; Rabbit: 100%; Zebrafish: 100%; Guinea pig: 100%; Yeast: 77%

**Human Spleen**

90 kDa  
65 kDa



Image 1



**WB Suggested Anti-UGCG Antibody Titration:** 0.2-  
1 ug/ml  
**ELISA Titer:** 1:1562500  
**Positive Control:** Human Spleen

This product is for Research Use Only. Not for diagnostic, human, or veterinary use.  
Optimal conditions of its use should be determined by end users.