

PPFIBP1 antibody - N-terminal region (ARP42133_T100)

Data Sheet

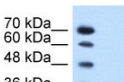
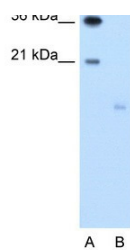
Product Number	ARP42133_T100
Product Name	PPFIBP1 antibody - N-terminal region (ARP42133_T100)
Size	100ug
Gene Symbol	PPFIBP1
Alias Symbols	L2; hSGT2; hSgt2p; SGT2
Nucleotide Accession#	NM_177444
Protein Size (# AA)	170 amino acids
Molecular Weight	19kDa
Product Format	Lyophilized powder
NCBI Gene Id	8496
Host	Rabbit
Clonality	Polyclonal
Official Gene Full Name	PTPRF interacting protein, binding protein 1 (liprin beta 1)
Gene Family	SAMD
Description	This is a rabbit polyclonal antibody against PPFIBP1. It was validated on Western Blot using a cell lysate as a positive control. Aviva Systems Biology strives to provide antibodies covering each member of a whole protein family of your interest. We also use our best efforts to provide you antibodies recognize various epitopes of a target protein. For availability of antibody needed for your experiment, please inquire ().
Peptide Sequence	Synthetic peptide located within the following region: PFMGSLRALHLVEDLRGLLEMMETDEKEGLRCQIPDSTAETLVEWLQSQM
Target Reference	Kriaevska,M., (2002) J. Biol. Chem. 277 (7), 5229-5235
Description of Target	PPFIBP1 is a member of the LAR protein-tyrosine phosphatase-interacting protein (liprin) family. Liprins interact with members of LAR family of transmembrane protein tyrosine phosphatases, which are known to be important for axon guidance and mammary gland development. It has been proposed that liprins are multivalent proteins that form complex structures and act as scaffolds for the recruitment and anchoring of LAR family of tyrosine phosphatases. This protein was found to interact with S100A4, a calcium-binding protein related to tumor invasiveness and metastasis. The protein encoded by this gene is a member of the LAR protein-tyrosine phosphatase-interacting protein (liprin) family. Liprins interact with members of LAR family of transmembrane protein tyrosine phosphatases, which are known to be important for axon guidance and mammary gland development. It has been proposed that liprins are multivalent proteins that form complex structures and act as scaffolds for the recruitment and anchoring of LAR family of tyrosine phosphatases. This protein was found to interact with S100A4, a calcium-binding protein related to tumor invasiveness and metastasis. In vitro experiment demonstrated that the interaction inhibited the phosphorylation of this protein by protein kinase C and protein kinase CK2. Alternatively spliced transcript variants encoding distinct isoforms have been reported.
Reconstitution and Storage	Add 100 ul of distilled water. Final anti-PPFIBP1 antibody concentration is 1 mg/ml in PBS buffer with 2% sucrose. For longer periods of storage, store at -20C. Avoid repeat freeze-thaw cycles.
Lead Time	Domestic: within 24 hours delivery International: 3-5 business days
Blocking Peptide	For anti-PPFIBP1 antibody is Catalog # AAP42133 (Previous Catalog # AAPS11706)
Immunogen	The immunogen for anti-PPFIBP1 antibody: synthetic peptide directed towards the N terminal of human PPFIBP1
Swissprot Id	Q86W92-5
Protein Name	Liprin-beta-1
Protein Accession #	NP_803193
Purification	Protein A purified
Species Reactivity	Rat, Bovine, Human, Horse, Rabbit, Pig, Mouse, Dog, Guinea pig, Zebrafish
Application	WB
Predicted Homology Based on Immunogen Sequence	Pig: 100%; Rat: 100%; Horse: 100%; Human: 100%; Mouse: 100%; Bovine: 100%; Rabbit: 100%; Dog: 93%; Guinea pig: 93%; Zebrafish: 79%
	Human Jurkat  <p>70 kDa 60 kDa 48 kDa 36 kDa</p>

Image 1



WB Suggested Anti-PPFIBP1 Antibody Titration:
2.5ug/ml
Positive Control: Jurkat cell lysate

This product is for Research Use Only. Not for diagnostic, human, or veterinary use.
Optimal conditions of its use should be determined by end users.