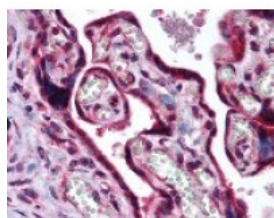




MAF Antibody

CATALOG NUMBER: 48-948



Immunohistochemistry staining of MAF in placenta (formalin-fixed paraffin embedded) tissue using MAF Antibody.

Specifications

SPECIES REACTIVITY:	Bovine, Dog, Gibbon, Gorilla, Human, Monkey, Mouse, Rat, Zebrafish
TESTED APPLICATIONS:	IHC, WB
APPLICATIONS:	MAF antibody can be used in ELISA, Western Blot, and immunohistochemistry starting at 5 ug/mL.
USER NOTE:	Optimal dilutions for each application to be determined by the researcher.
SPECIFICITY:	A portion of amino acids 50-100 of human c-maf.
IMMUNOGEN:	MAF antibody was raised against amino acids 50 - 100 of MAF (Human).
HOST SPECIES:	Rabbit

Properties

PURIFICATION:	Immunoaffinity Chromatography
PHYSICAL STATE:	Liquid
BUFFER:	PBS, 0.2% gelatin, 0.05% sodium azide.
STORAGE CONDITIONS:	MAF antibody can be stored short term 4 °C. For long term storage aliquot and store at -20 °C. As with all antibodies avoid freeze/thaw cycles.
CLONALITY:	Polyclonal
CONJUGATE:	Unconjugated

Additional Info

ALTERNATE NAMES:	MAF, C-MAF, CCA4, C-maf proto-oncogene, Proto-oncogene c-Maf, T lymphocyte c-maf long form, Transcription factor Maf
ACCESSION NO.:	O75444
PROTEIN GI NO.:	223590080
OFFICIAL SYMBOL:	MAF
GENE ID:	4094

Background

