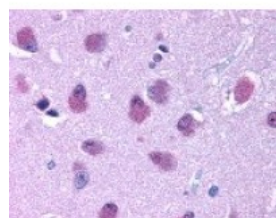




BRS3 Antibody

CATALOG NUMBER: 48-160



Immunohistochemistry staining of BRS3 in brain tissue using BRS3 Antibody.

Specifications

SPECIES REACTIVITY:	Bovine, Dog, Gibbon, Gorilla, Guinea Pig, Hamster, Horse, Human, Mouse, Rat
TESTED APPLICATIONS:	IHC
APPLICATIONS:	BRS3 antibody can be used in Western Blot starting at 0.5 ug/mL, immunohistochemistry starting at 10 ug/mL, and immunoprecipitation.
USER NOTE:	Optimal dilutions for each application to be determined by the researcher.
SPECIFICITY:	BLAST analysis of the peptide immunogen showed no homology with other human proteins.
IMMUNOGEN:	BRS3 antibody was raised against a peptide located in the 3rd cytoplasmic domain of BRS3 (Human).
HOST SPECIES:	Rabbit

Properties

PURIFICATION:	Immunoaffinity Chromatography
PHYSICAL STATE:	Liquid
BUFFER:	PBS, 0.1% sodium azide.
STORAGE CONDITIONS:	BRS3 antibody should be stored long term (months) at -80 °C and short term (days) at 4 °C. As with all antibodies avoid freeze/thaw cycles.
CLONALITY:	Polyclonal
CONJUGATE:	Unconjugated

Additional Info

ALTERNATE NAMES:	BRS3, BB3 receptor, Bombesin-like receptor 3, Bombesin receptor subtype 3, Bombesin receptor subtype-3, BRS-3, BLP receptor subtype 3, Bombesin receptor 3
ACCESSION NO.:	P32247
PROTEIN GI NO.:	416726
OFFICIAL SYMBOL:	BRS3
GENE ID:	680

Background

BACKGROUND:

BRS3 is classified as an Orphan-A Receptor and is highly similar to the bombesin receptors but has a very low affinity for bombesin itself. Mice lacking BRS3 develop metabolic defects and obesity, suggesting that BRS3 may be an important target for obesity research. In addition, BRS3 may be involved in diabetes and hypertension.

FOR RESEARCH USE ONLY

December 13, 2016